



## Motor fire fighting pump set



50Hz  
**XBD** SERIES



- Safe and reliable
- Energy-efficient
- Convenient & humanization

SHANGHAI SINO-KOREA DOOCH PUMP MFG CO.,LTD

**dooch**  
www.doochpump.com.cn

# Contents

## Vertical single-stage fire fighting pump set

- Product overview ..... 01-01
- Working conditions ..... 01-01
- Model Description ..... 01-01
- Main components material ..... 03-03
- Electric motor ..... 03-03
- Order parameters ..... 03-03
- Structure diagram ..... 04-04
- Type diagram ..... 05-05
- Performance parameters and installation dimensions..... 06-23
- Performance graph ..... 24-28

## Vertical multi-stage fire fighting pump set

- Product description ..... 30-30
- Working conditions ..... 30-30
- Model Description ..... 30-30
- Main components material ..... 31-31
- Electric motor ..... 31-31
- Order parameters ..... 31-31
- Structure diagram ..... 32-32
- Type diagram ..... 33-33
- Performance parameters and installation dimensions ... 34-42
- Performance graph ..... 44-51

● Product overview:

XBD series vertical single-stage electric motor fire fighting pump set is a new product developed by the company according to the market demand and use characteristics of domestic and foreign construction fire-fighting pumps. The product is fully compliant and meets national standards "CNCA-C18-03: 2014 Fire Extinguishing Equipment Product Compulsory Certification Implementation Rules", "CCCF-MHSB-08(A / 0) Mandatory product certification implementation rules & Fire extinguishing equipment products & Fire fighting water supply equipment products", "GB6245-2006 fire fighting pump" standard requirements,

The series pumps adopt advanced design and technology which have high reliability (there is no bite malfunction when start after a long outage), high efficiency, low noise, low vibration, long operating life, Inlet&Outlet flange pipeline layout, easy installation and maintenance. This series of pump sets has a wide range of performance; smooth flow and head curves to avoid system overload; the pressure distribution is dense, which is conducive to pump selection and energy conservation.

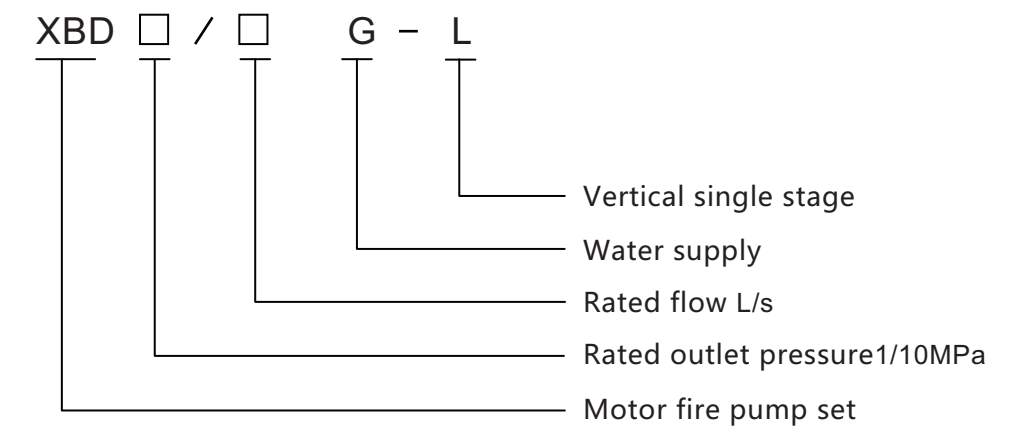
The use of high-quality bearings and motors makes the pump set safer and more reliable.

High temperature resistant mechanical seal, no leakage

● Working conditions:

Rotating speed	2900 r/min
Liquid temperature	≤80°C Plain water
Flow range	5 ~ 50 L/s
Pressure range	0.3 ~ 1.0 MPa

● Model Description:



dooch



**XBD SERIES**  
vertical single stage  
fire fighting pump set

- Main components material:

Part name	Materials		
Pump body	Cast iron	HT250	GB/ T 9439
Pump head	Cast iron	HT250	GB/ T 9439
Impeller	Stainless steel	06Cr19Ni10	GB/ T 20878
Shaft	Stainless steel	20Cr13	GB/ T 20878
Mouth ring sealing ring	Copper	ZCuSn5Pb5Zn5	GB/T 1176
Shaft seal	Mechanical seal		

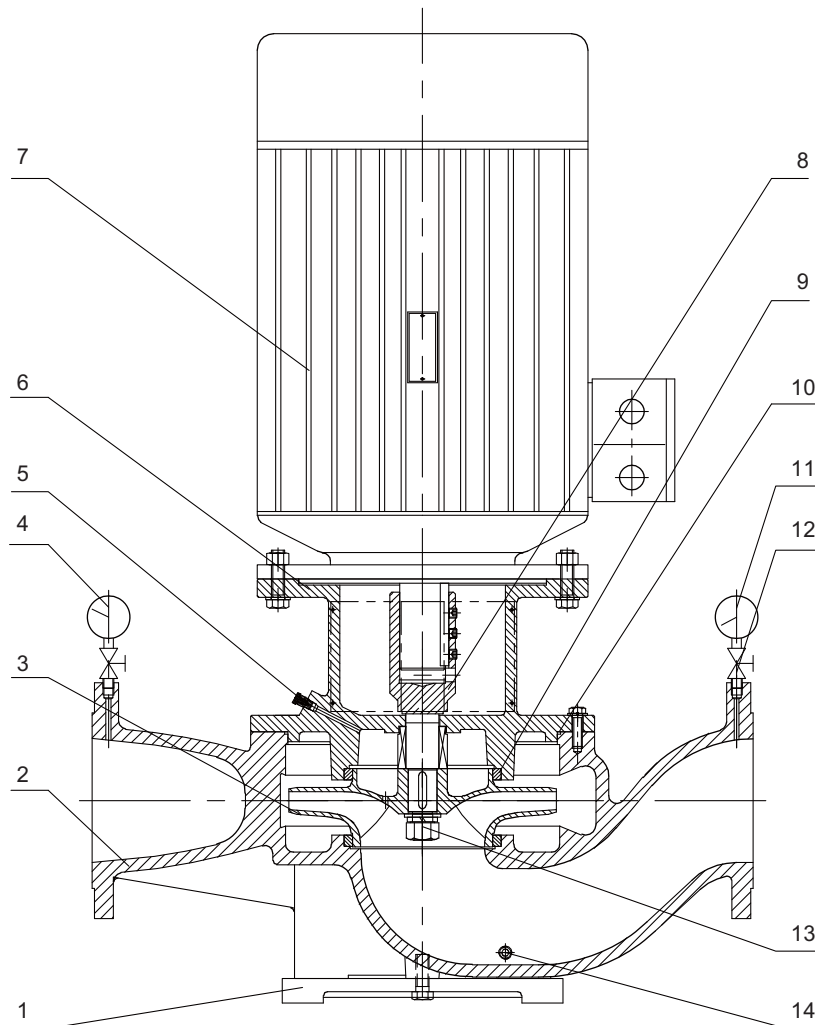
- Motor:

YY2 series fully enclosed fan air-cooled 3-Phase Squirrel Cage Induction Motor	
Voltage	380V
Frequency	50HZ
Protection class	IP55
Insulation class	F class
Installation type	B14/B5
Special motor supply as required	

- Order parameters

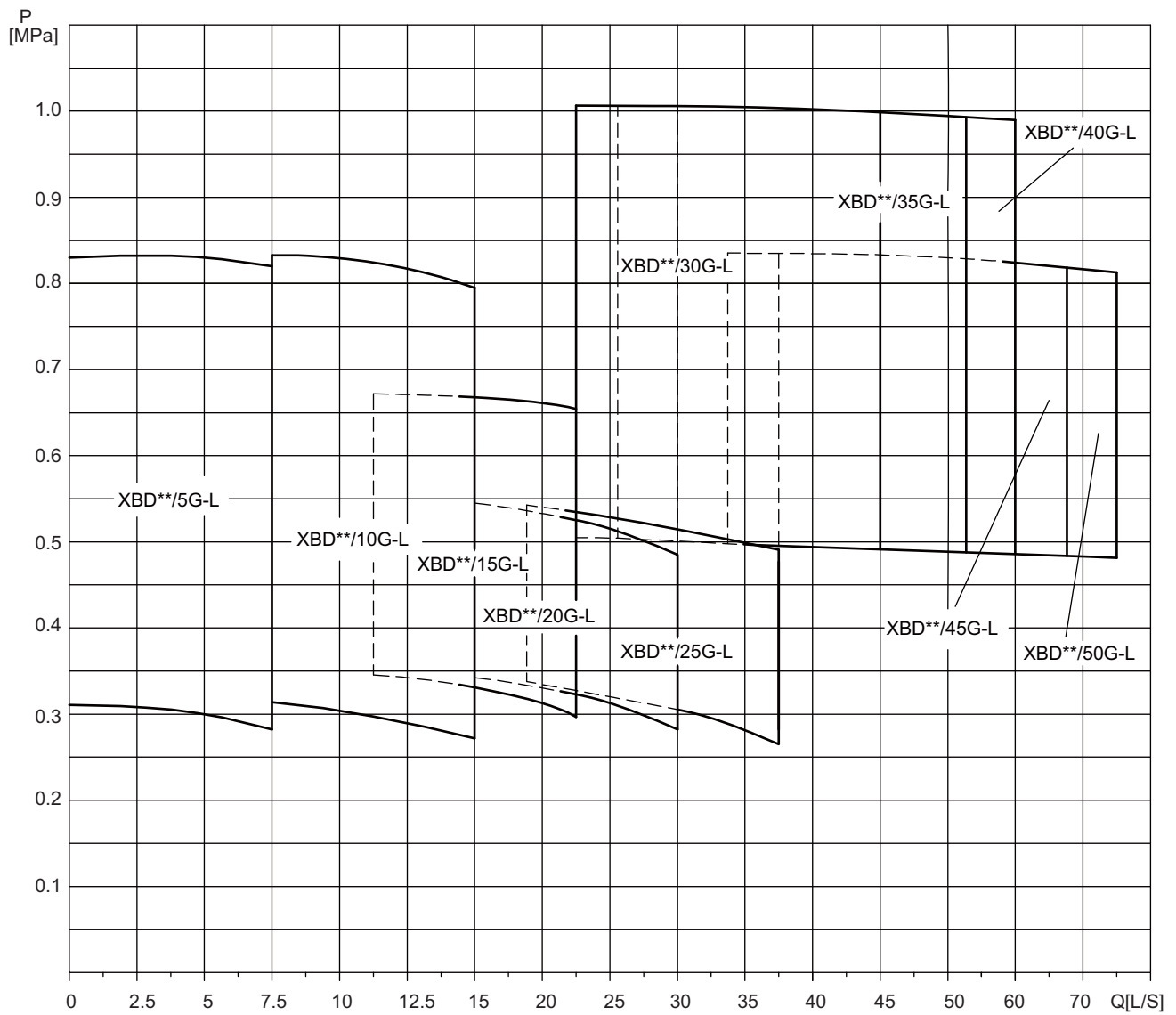
- Pump
  - Pump model
  - Flow
  - Pressure
  - Material requirements
- Motor
  - Protection class
  - Insulation class
- Accessories
  - Vibration isolator (isolation pad)

● Structure diagram

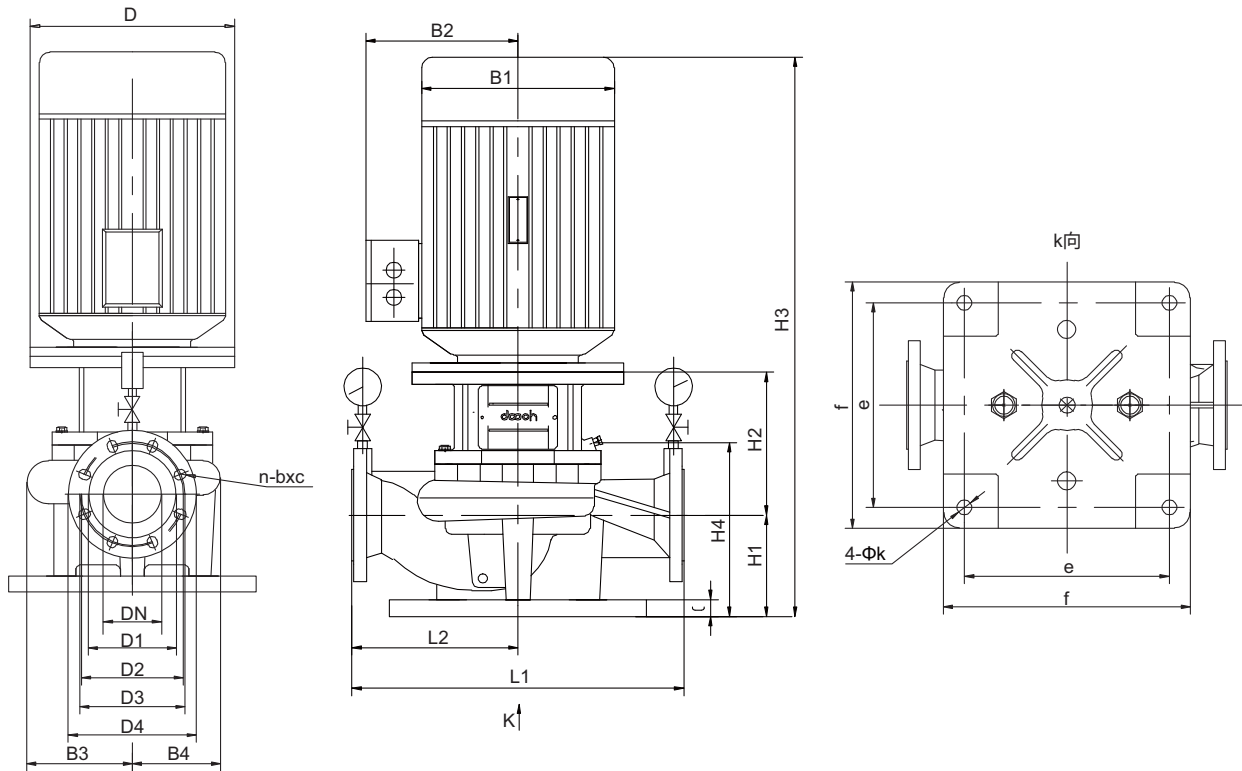


S/N	Name	S/N	Name
1	Bottom plate	8	Shaft
2	Pump body	9	Sealing ring
3	Impeller	10	O-ring
4	Pressure gauge	11	Vacum gauge
5	Vent plug	12	Globe valve
6	Pump head bracket	13	Impeller nut
7	Motor	14	Water drain plug

## ● Type diagram :



● Dimensions :



● Flange size table :

DN	D1	D2	D3	D4	n-b×c
40	81	105	110	150	4-18×20.5
50	96	120	125	165	4-18×20.5

● Installation size table :

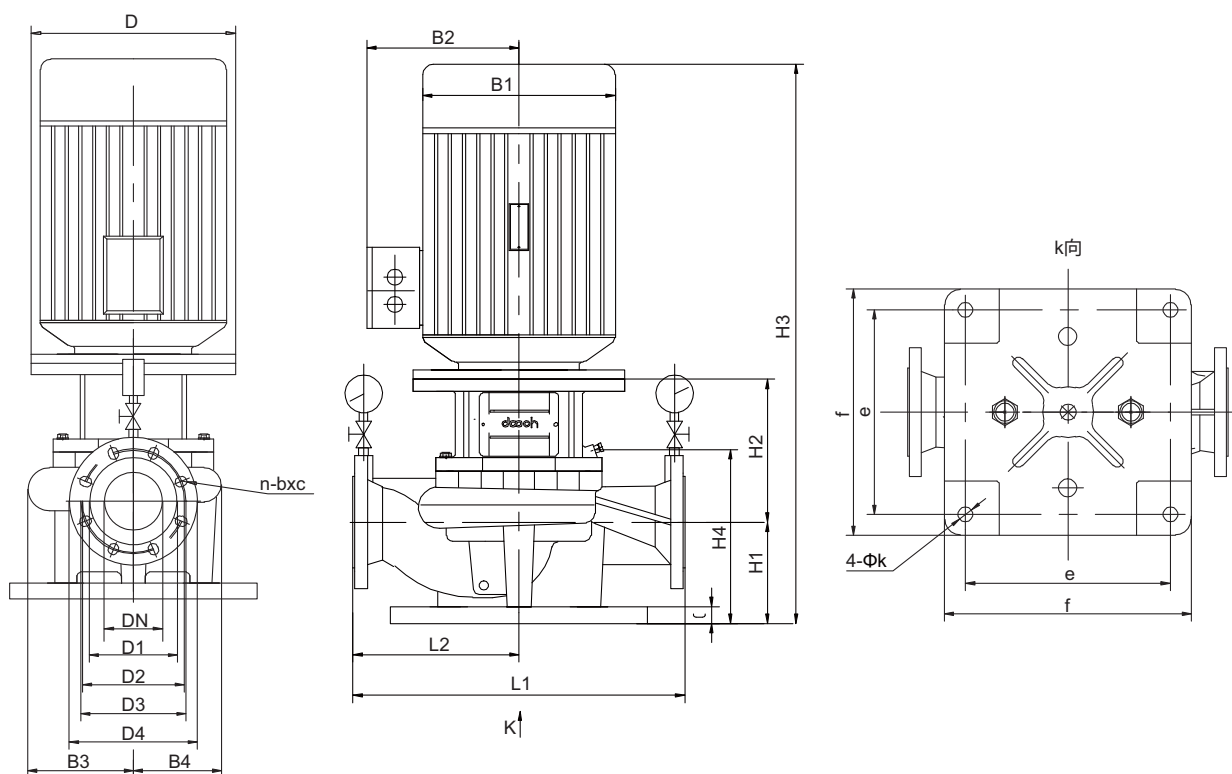
Model	Power(kW)	DN	D	B1	B2	B3	B4	C	H1	H2	H3	H4	L1	L2	e	f	4-Φk
XBD3.0/5G-L	4	40	160	220	195	128	116	30	130	184.5	654.5	234	340	170	195	235	4-Φ14
XBD4.7/5G-L	5.5	40	200	260	215	139	128	30	140	212.5	735.5	251	440	220	195	235	4-Φ14
XBD4.8/5G-L	7.5	40	200	260	215	139	128	30	140	212.5	735.5	251	440	220	195	235	4-Φ14
XBD5.5/5G-L	7.5	50	200	260	215	171	163	30	145	187	715	226	440	220	195	235	4-Φ14
XBD5.6/5G-L	11	50	350	320	260	171	163	30	145	250	900	248	440	220	195	235	4-Φ14
XBD6.8/5G-L	11	50	350	320	260	171	163	30	145	250	900	248	440	220	195	235	4-Φ14
XBD6.9/5G-L	15	50	350	320	260	171	163	30	145	250	900	248	440	220	195	235	4-Φ14
XBD8.2/5G-L	11	50	350	320	260	171	163	30	145	250	900	248	440	220	195	235	4-Φ14
XBD8.3/5G-L	22	50	350	355	280	171	163	30	145	250	973	248	440	220	195	235	4-Φ14

● Performance parameter table :

	Model	Flow (L/s)	Pressure (MPa)	Rotating speed (r/min)	Power (kW)	Weight (kg)
	XBD**/5G-L	XBD3.0/5G-L	0	0.31	2900	4
5			0.30			
7.5			0.28			
XBD4.7/5G-L		0	0.49	2900	5.5	107
		5	0.47			
		7.5	0.46			
XBD4.8/5G-L		0	0.50	2900	7.5	110
		5	0.48			
		7.5	0.47			
XBD5.5/5G-L		0	0.56	2900	7.5	129
		5	0.55			
		7.5	0.54			
XBD5.6/5G-L		0	0.57	2900	11	181
		5	0.56			
		7.5	0.55			
XBD6.8/5G-L		0	0.69	2900	11	181
		5	0.68			
		7.5	0.67			
XBD6.9/5G-L		0	0.70	2900	15	191
		5	0.69			
		7.5	0.68			
XBD8.2/5G-L		0	0.83	2900	11	194
		5	0.82			
		7.5	0.81			
XBD8.3/5G-L	0	0.84	2900	22	245	
	5	0.83				
	7.5	0.82				



● Dimensions :



● Flange size table :

DN	D1	D2	D3	D4	n-b×c
65	116	140	145	185	4-18×20.5

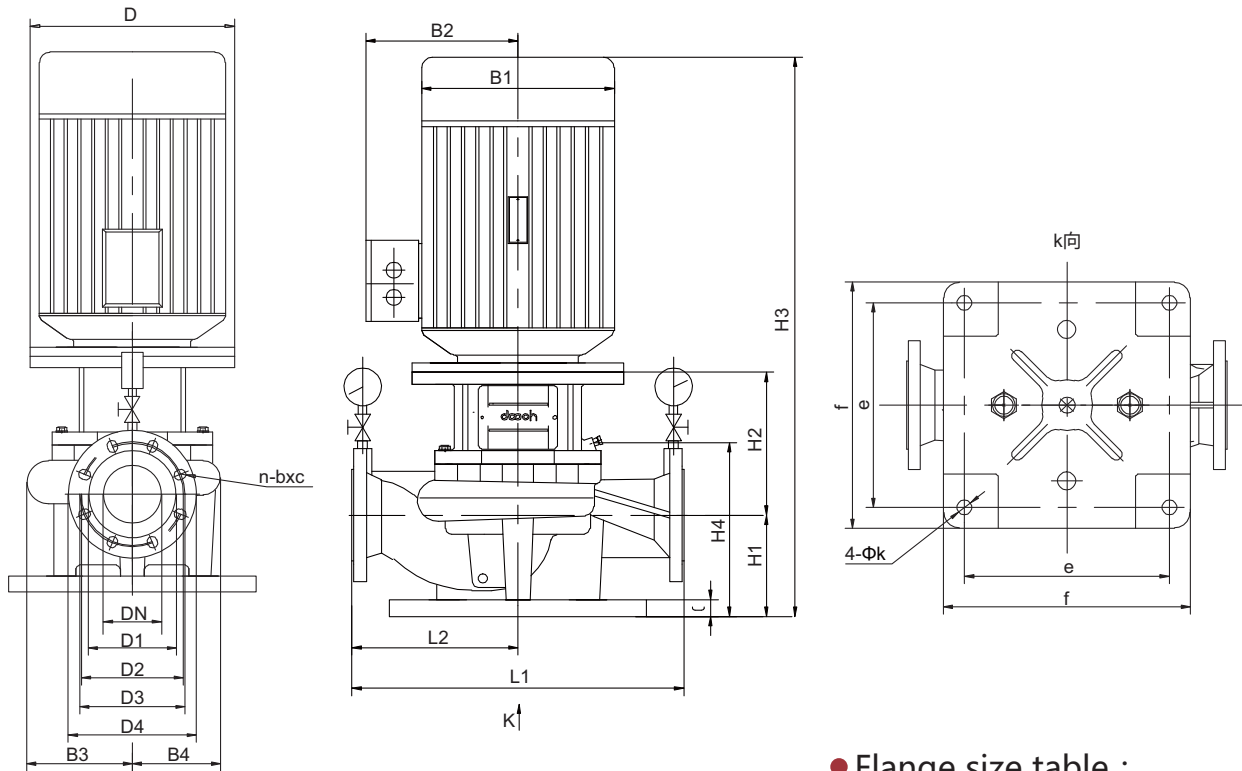
● Installation size table :

Model	Power(kW)	DN	D	B1	B2	B3	B4	C	H1	H2	H3	H4	L1	L2	e	f	4-Φk
XBD3.1/10G-L	5.5	65	200	260	215	142	125	30	135	213	731	246	360	180	195	235	4-Φ14
XBD3.6/10G-L	7.5	65	200	260	215	142	125	30	135	213	731	246	360	180	195	235	4-Φ14
XBD4.4/10G-L	11	65	350	320	260	179	163	30	155	262	922	270	475	237.5	195	235	4-Φ14
XBD5.3/10G-L	11	65	350	320	260	179	163	30	155	262	922	270	475	237.5	195	235	4-Φ14
XBD5.4/10G-L	15	65	350	320	260	179	163	30	155	262	922	270	475	237.5	195	235	4-Φ14
XBD6.2/10G-L	15	65	350	320	260	179	163	30	155	262	922	270	475	237.5	195	235	4-Φ14
XBD6.3/10G-L	18.5	65	350	320	260	179	163	30	155	262	977	270	475	237.5	195	235	4-Φ14
XBD7.0/10G-L	15	65	350	320	260	179	163	30	155	262	922	270	475	237.5	195	235	4-Φ14
XBD7.1/10G-L	22	65	350	355	280	179	163	30	155	262	995	270	475	237.5	195	235	4-Φ14
XBD8.2/10G-L	18.5	65	350	320	260	179	163	30	155	262	977	270	475	237.5	195	235	4-Φ14
XBD8.3/10G-L	30	65	400	400	305	179	163	30	155	262	1077	270	475	237.5	195	235	4-Φ14

● Performance parameter table :

	Model	Flow (L/s)	Pressure (MPa)	Rotating speed (r/min)	Power (kW)	Weight (kg)
XBD**/10G-L	XBD3.1/10G-L	0	0.32	2900	5.5	105
		10	0.31			
		15	0.26			
	XBD3.6/10G-L	0	0.38	2900	7.5	108
		10	0.36			
		15	0.32			
	XBD4.4/10G-L	0	0.45	2900	11	183
		10	0.44			
		15	0.41			
	XBD5.3/10G-L	0	0.55	2900	11	185
		10	0.53			
		15	0.51			
	XBD5.4/10G-L	0	0.56	2900	15	193
		10	0.54			
		15	0.52			
	XBD6.2/10G-L	0	0.63	2900	15	198
		10	0.62			
		15	0.60			
	XBD6.3/10G-L	0	0.64	2900	18.5	210
		10	0.63			
		15	0.61			
	XBD7.0/10G-L	0	0.72	2900	15	205
		10	0.70			
		15	0.68			
	XBD7.1/10G-L	0	0.73	2900	22	248
		10	0.71			
		15	0.69			
	XBD8.2/10G-L	0	0.84	2900	18.5	228
		10	0.82			
		15	0.81			
XBD8.3/10G-L	0	0.85	2900	30	309	
	10	0.83				
	15	0.82				

● Dimensions :



● Flange size table :

DN	D1	D2	D3	D4	n-b×c
80	126	150	160	200	8-18×23

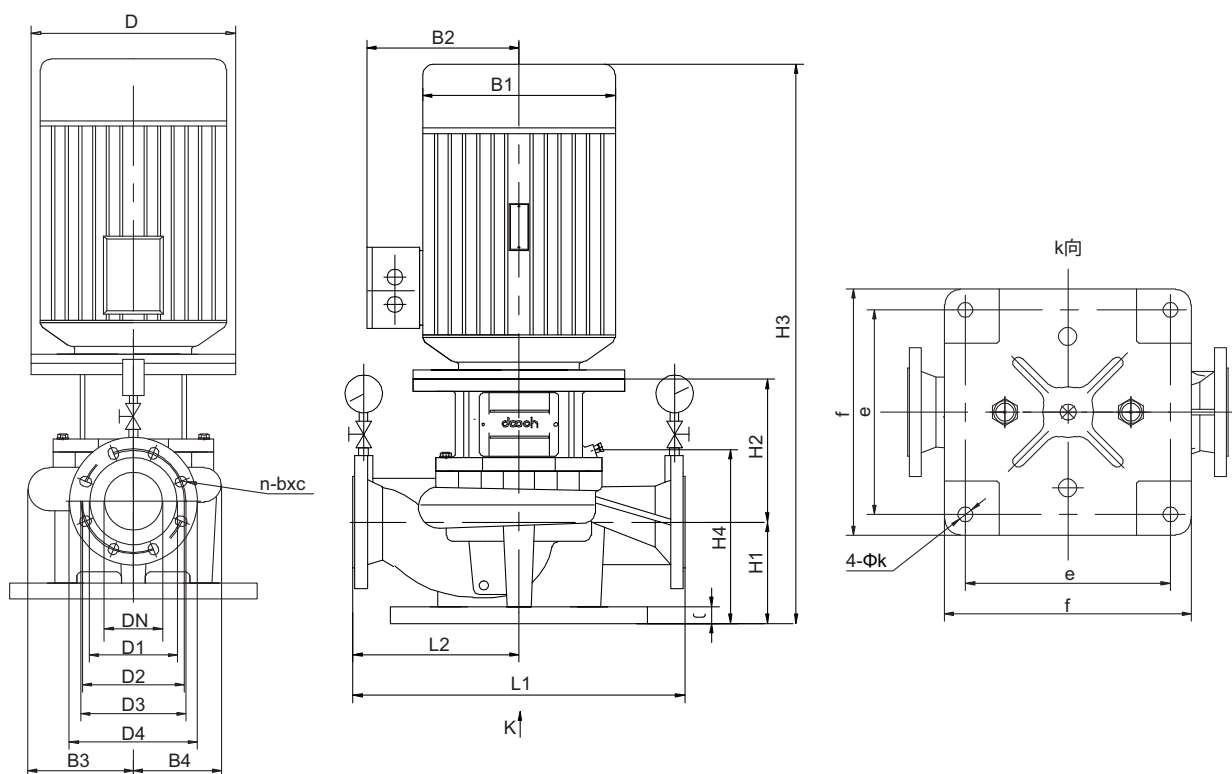
● Installation size table :

Model	Power(kW)	DN	D	B1	B2	B3	B4	C	H1	H2	H3	H4	L1	L2	e	f	4-Φk
XBD3.3/15G-L	11	80	350	320	260	182	163	30	145	279	929	277	500	250	195	235	4-Φ14
XBD4.1/15G-L	11	80	350	320	260	182	163	30	145	279	929	277	500	250	195	235	4-Φ14
XBD4.2/15G-L	15	80	350	320	260	182	163	30	145	279	929	277	500	250	195	235	4-Φ14
XBD5.0/15G-L	15	80	350	320	260	182	163	30	145	279	929	277	500	250	195	235	4-Φ14
XBD5.1/15G-L	18.5	80	350	320	260	182	163	30	145	279	984	277	500	250	195	235	4-Φ14
XBD5.5/15G-L	18.5	80	350	320	260	182	163	30	145	279	984	277	500	250	195	235	4-Φ14
XBD5.6/15G-L	22	80	350	355	280	182	163	30	145	279	1002	277	500	250	195	235	4-Φ14
XBD6.6/15G-L	22	80	350	355	280	182	163	30	145	279	1002	277	500	250	195	235	4-Φ14
XBD6.7/15G-L	30	80	400	400	305	182	163	30	145	279	1084	277	500	250	195	235	4-Φ14

● Dimensions :

	Model	Flow (L/s )	Pressure ( MPa )	Rotating speed ( r/min )	Power ( kW )	Weight ( kg )
XBD**/15G-L	XBD3.3/15G-L	0	0.35	2900	11	194
		15	0.33			
		22.5	0.29			
	XBD4.1/15G-L	0	0.43	2900	11	198
		15	0.41			
		22.5	0.38			
	XBD4.2/15G-L	0	0.44	2900	15	204
		15	0.42			
		22.5	0.39			
	XBD5.0/15G-L	0	0.52	2900	15	208
		15	0.50			
		22.5	0.47			
	XBD5.1/15G-L	0	0.53	2900	18.5	222
		15	0.51			
		22.5	0.48			
	XBD5.5/15G-L	0	0.57	2900	18.5	228
		15	0.55			
		22.5	0.54			
	XBD5.6/15G-L	0	0.58	2900	22	258
		15	0.56			
		22.5	0.55			
	XBD6.6/15G-L	0	0.69	2900	22	277
		15	0.66			
		22.5	0.64			
XBD6.7/15G-L	0	0.70	2900	30	319	
	15	0.67				
	22.5	0.65				

● Dimensions :



● Flange size table :

DN	D1	D2	D3	D4	n-bxc
100	151	175	180	220	8-18x23

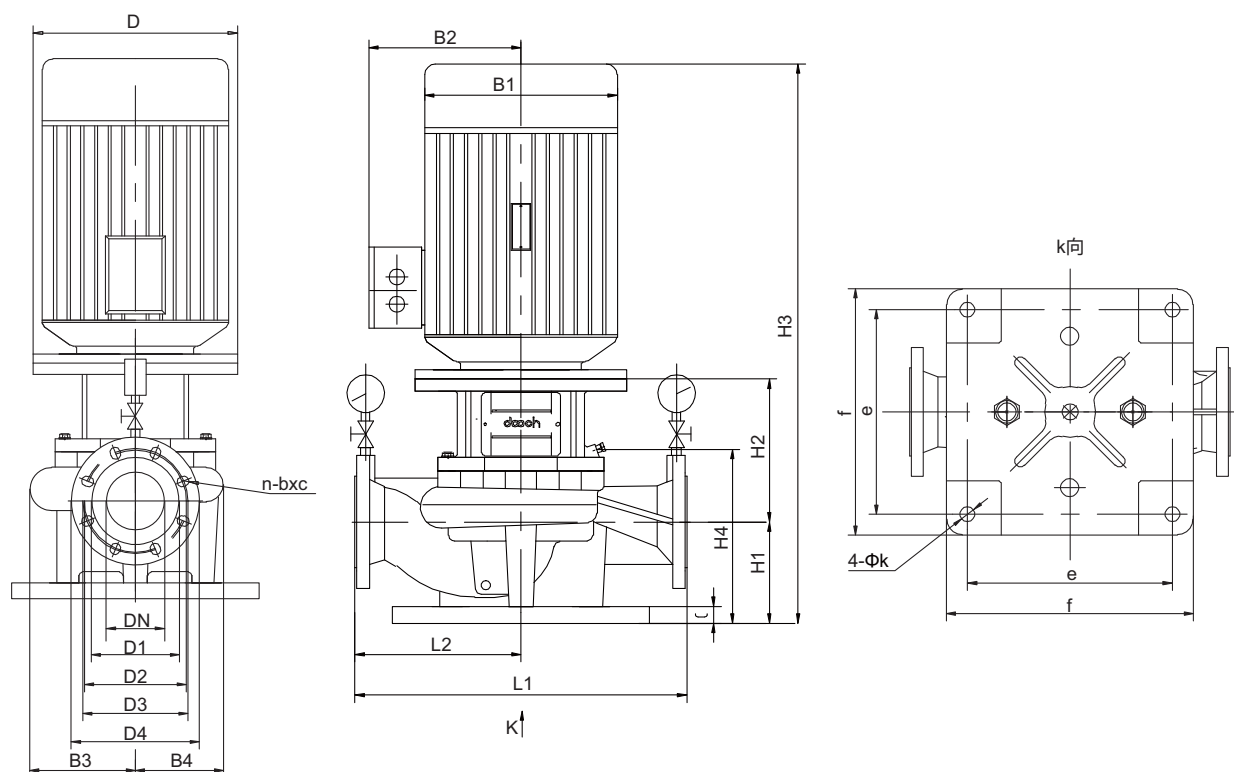
● Installation size table :

Model	Power(kW)	DN	D	B1	B2	B3	B4	C	H1	H2	H3	H4	L1	L2	e	f	4-Φk
XBD3.2/20G-L	11	100	350	320	260	181	152	30	170	270	945	290	550	275	290	340	4-Φ19
XBD3.3/20G-L	15	100	350	320	260	181	152	30	170	270	945	290	550	275	290	340	4-Φ19
XBD3.5/20G-L	15	100	350	320	260	181	152	30	170	270	945	290	550	275	290	340	4-Φ19
XBD3.6/20G-L	18.5	100	350	320	260	181	152	30	170	270	1000	290	550	275	290	340	4-Φ19
XBD4.1/20G-L	15	100	350	320	260	181	152	30	170	270	945	290	550	275	290	340	4-Φ19
XBD4.2/20G-L	22	100	350	355	280	181	152	30	170	270	1018	290	550	275	290	340	4-Φ19
XBD5.2/20G-L	22	100	350	355	280	181	152	30	170	270	1018	290	550	275	290	340	4-Φ19
XBD5.3/20G-L	30	100	400	400	305	181	152	30	170	270	1100	290	550	275	290	340	4-Φ19

● Performance parameter table :

	Model	Flow (L/s )	Pressure ( MPa )	Rotating speed ( r/min )	Power ( kW )	Weight ( kg )
XBD**/20G-L	XBD3.2/20G-L	0	0.34	2900	11	197
		20	0.32			
		30	0.30			
	XBD3.3/20G-L	0	0.35	2900	15	207
		20	0.33			
		30	0.31			
	XBD3.5/20G-L	0	0.37	2900	15	209
		20	0.35			
		30	0.34			
	XBD3.6/20G-L	0	0.38	2900	18.5	224
		20	0.36			
		30	0.35			
	XBD4.1/20G-L	0	0.42	2900	15	210
		20	0.41			
		30	0.39			
	XBD4.2/20G-L	0	0.43	2900	22	260
		20	0.42			
		30	0.40			
	XBD5.2/20G-L	0	0.54	2900	22	276
		20	0.52			
		30	0.51			
	XBD5.3/20G-L	0	0.55	2900	30	318
		20	0.53			
		30	0.52			

● Dimensions :



● Flange size table :

DN	D1	D2	D3	D4	n-b×c
100	151	175	180	220	8-18×23

● Installation size table :

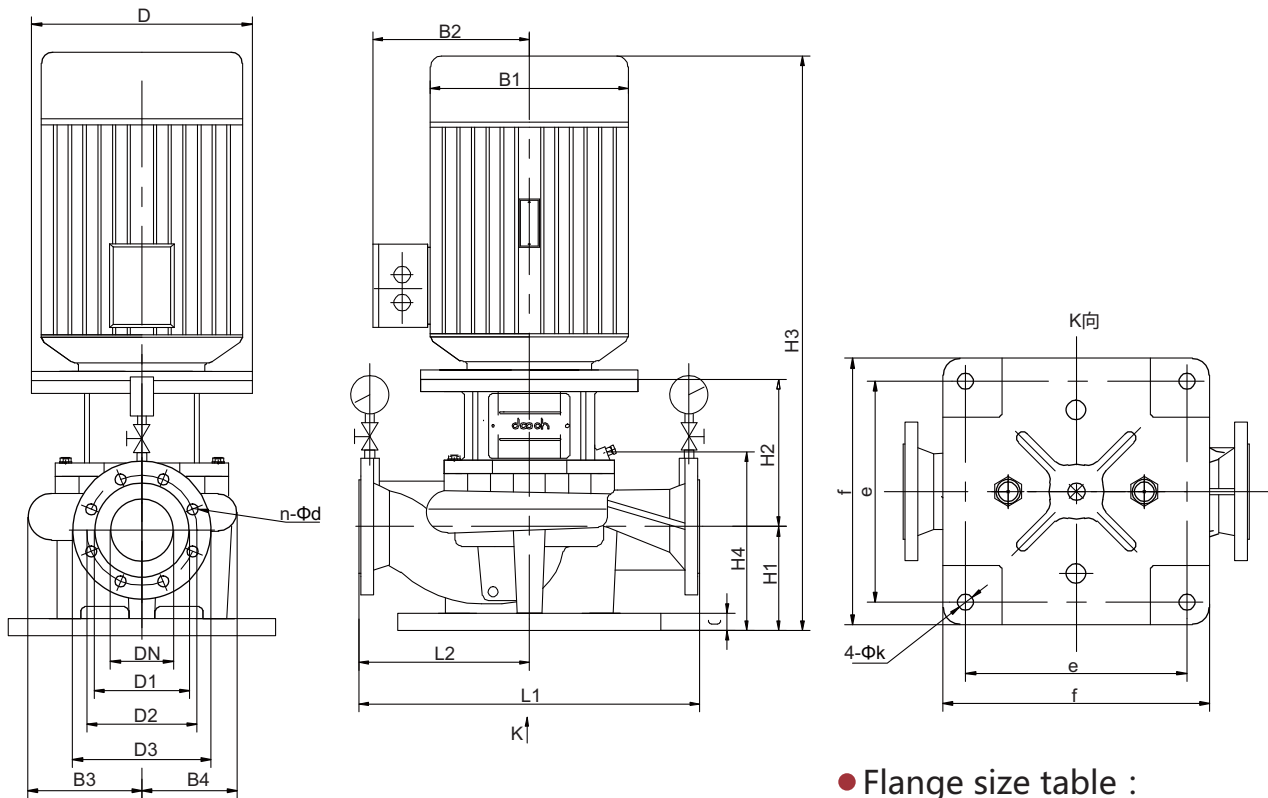
Model	Power(kW)	DN	D	B1	B2	B3	B4	C	H1	H2	H3	H4	L1	L2	e	f	4-Φk
XBD3.2/25G-L	15	100	350	320	260	181	152	30	170	270	945	290	550	275	290	340	4-Φ19
XBD3.5/25G-L	15	100	350	320	260	181	152	30	170	270	945	290	550	275	290	340	4-Φ19
XBD3.6/25G-L	18.5	100	350	320	260	181	152	30	170	270	1000	290	550	275	290	340	4-Φ19
XBD4.0/25G-L	18.5	100	350	320	260	181	152	30	170	270	1000	290	550	275	290	340	4-Φ19
XBD4.1/25G-L	22	100	350	355	280	181	152	30	170	270	1018	290	550	275	290	340	4-Φ19
XBD5.3/25G-L	30	100	400	400	305	181	152	30	170	270	1100	290	550	275	290	340	4-Φ19

● Performance parameter table :

	Model	Flow (L/s )	Pressure ( MPa )	Rotating speed ( r/min )	Power ( kW )	Weight ( kg )
XBD**/25G-L	XBD3.2/25G-L	0	0.35	2900	15	207
		25	0.32			
		37.5	0.27			
	XBD3.5/25G-L	0	0.37	2900	15	209
		25	0.35			
		37.5	0.29			
	XBD3.6/25G-L	0	0.38	2900	18.5	224
		25	0.36			
		37.5	0.30			
	XBD4.0/25G-L	0	0.42	2900	18.5	232
		25	0.40			
		37.5	0.36			
	XBD4.1/25G-L	0	0.43	2900	22	260
		25	0.41			
		37.5	0.37			
	XBD5.3/25G-L	0	0.55	2900	30	318
		25	0.53			
		37.5	0.51			



● Dimensions :



● Flange size table :

DN	D1	D2	D3	n-Φd
125	184	210	250	8-Φ18

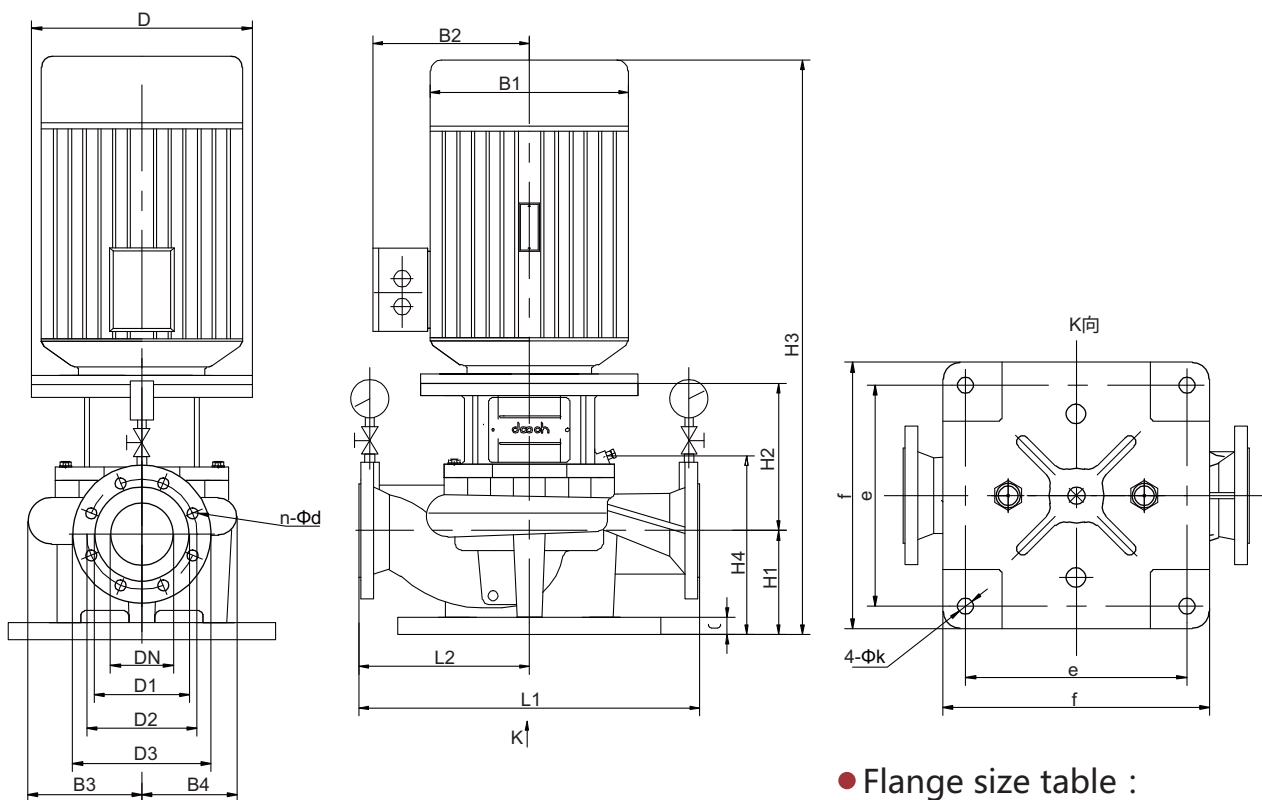
● Installation size table :

Model	Power(kW)	DN	D	B1	B2	B3	B4	C	H1	H2	H3	H4	L1	L2	e	f	4-Φk
XBD5.0/30G-L	37	125	400	400	305	217	177	30	245	257.5	1152.5	366	620	310	290	340	4-Φ19
XBD6.1/30G-L	45	125	400	450	335	217	177	30	245	257.5	1197.5	366	620	310	290	340	4-Φ19
XBD7.1/30G-L	55	125	550	490	365	272	248	30	245	328	1343	408	800	400	290	340	4-Φ19
XBD8.5/30G-L	75	125	550	550	400	272	248	30	245	328	1418	408	800	400	290	340	4-Φ19
XBD9.2/30G-L	75	125	550	550	400	272	248	30	245	328	1418	408	800	400	290	340	4-Φ19
XBD9.9/30G-L	75	125	550	550	400	272	248	30	245	328	1418	408	800	400	290	340	4-Φ19
XBD10.0/30G-L	90	125	550	550	400	272	248	30	245	328	1463	408	800	400	290	340	4-Φ19

● Performance parameter table :

	Model	Flow (L/s)	Pressure (MPa)	Rotating speed (r/min)	Power (kW)	Weight (kg)
	XBD**/30G-L	XBD5.0/30G-L	0	0.55	2900	37
30			0.50			
45			0.49			
XBD6.1/30G-L		0	0.64	2900	45	437
		30	0.61			
		45	0.60			
XBD7.1/30G-L		0	0.77	2900	55	620
		30	0.71			
		45	0.70			
XBD8.5/30G-L		0	0.88	2900	75	740
		30	0.85			
		45	0.83			
XBD9.2/30G-L		0	0.95	2900	75	740
		30	0.92			
		45	0.89			
XBD9.9/30G-L		0	1.06	2900	75	740
		30	0.99			
		45	0.98			
XBD10.0/30G-L		0	1.07	2900	90	820
		30	1.00			
		45	0.99			

● Dimensions :



● Flange size table :

DN	D1	D2	D3	n-Φd
125	184	210	250	8-Φ18

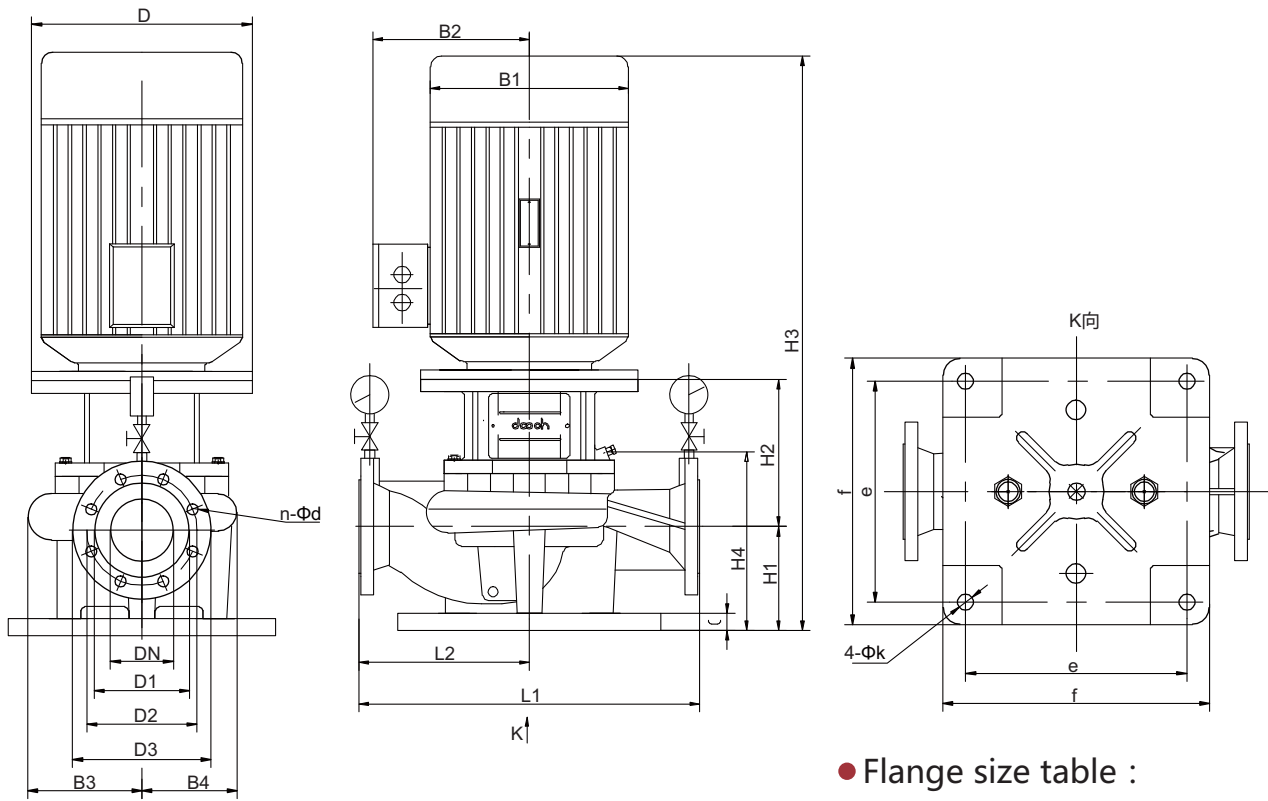
● Installation size table :

Model	Power(kW)	DN	D	B1	B2	B3	B4	C	H1	H2	H3	H4	L1	L2	e	f	4-Φk
XBD5.0/35G-L	37	125	400	400	305	217	177	30	245	257.5	1152.5	366	620	310	290	340	4-Φ19
XBD6.1/35G-L	45	125	400	450	335	217	177	30	245	257.5	1197.5	366	620	310	290	340	4-Φ19
XBD7.1/35G-L	55	125	550	490	365	272	248	30	245	328	1343	408	800	400	290	340	4-Φ19
XBD8.5/35G-L	75	125	550	550	400	272	248	30	245	328	1418	408	800	400	290	340	4-Φ19
XBD10.0/35G-L	90	125	550	550	400	272	248	30	245	328	1463	408	800	400	290	340	4-Φ19

● Performance parameter table :

XBD**/35G-L	Model	Flow (L/s )	Pressure ( MPa )	Rotating speed ( r/min )	Power ( kW )	Weight ( kg )
	XBD5.0/35G-L		0	0.55	2900	37
		35	0.50			
		52.5	0.48			
XBD6.1/35G-L		0	0.64	2900	45	437
		35	0.61			
		52.5	0.60			
XBD7.1/35G-L		0	0.77	2900	55	620
		35	0.71			
		52.5	0.68			
XBD8.5/35G-L		0	0.88	2900	75	740
		35	0.85			
		52.5	0.82			
XBD10.0/35G-L		0	1.07	2900	90	820
		35	1.00			
		52.5	0.99			

● Dimensions :



● Flange size table :

DN	D1	D2	D3	n-Φd
125	184	210	250	8-Φ18

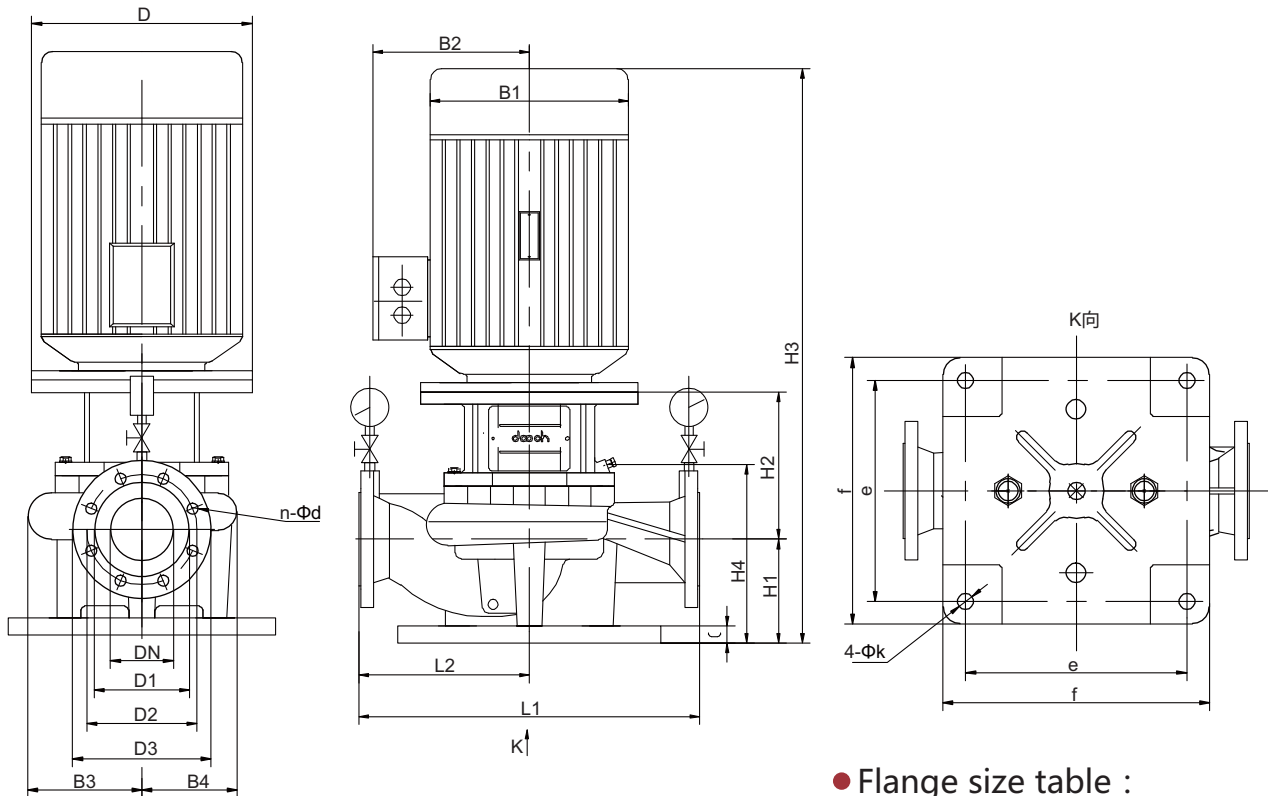
● Installation size table :

Model	Power(kW)	DN	D	B1	B2	B3	B4	C	H1	H2	H3	H4	L1	L2	e	f	4-Φk
XBD4.9/40G-L	37	125	400	400	305	217	177	30	245	257.5	1152.5	366	620	310	290	340	4-Φ19
XBD6.0/40G-L	45	125	400	450	335	217	177	30	245	257.5	1197.5	366	620	310	290	340	4-Φ19
XBD7.1/40G-L	55	125	550	490	365	272	248	30	245	328	1343	408	800	400	290	340	4-Φ19
XBD8.4/40G-L	75	125	550	550	400	272	248	30	245	328	1418	408	800	400	290	340	4-Φ19
XBD9.1/40G-L	75	125	550	550	400	272	248	30	245	328	1418	408	800	400	290	340	4-Φ19
XBD10.0/40G-L	90	125	550	550	400	272	248	30	245	328	1463	408	800	400	290	340	4-Φ19

● Performance parameter table :

Model	Flow (L/s)	Pressure (MPa)	Rotating speed (r/min)	Power (kW)	Weight (kg)	
XBD**/40G-L	XBD4.9/40G-L	0	0.55	2900	37	352
		40	0.49			
		60	0.48			
	XBD6.0/40G-L	0	0.64	2900	45	437
		40	0.60			
		60	0.59			
	XBD7.1/40G-L	0	0.77	2900	55	620
		40	0.71			
		60	0.68			
	XBD8.4/40G-L	0	0.77	2900	75	740
		40	0.84			
		60	0.82			
	XBD9.1/40G-L	0	0.95	2900	75	740
		40	0.91			
		60	0.85			
	XBD10.0/40G-L	0	1.07	2900	90	820
		40	1.00			
		60	0.99			

● Dimensions :



● Flange size table :

DN	D1	D2	D3	n-Φd
125	184	210	250	8-Φ18

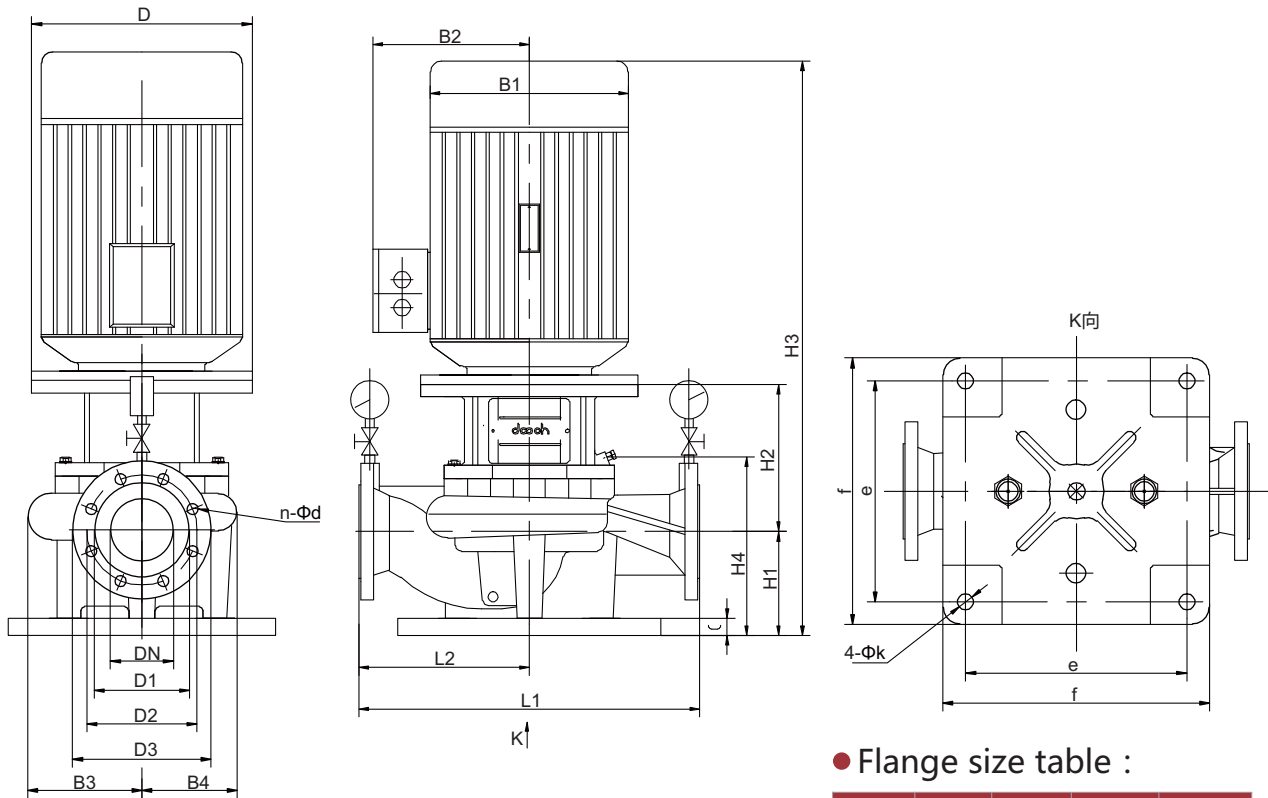
● Installation size table :

Model	Power(kW)	DN	D	B1	B2	B3	B4	C	H1	H2	H3	H4	L1	L2	e	f	4-Φk
XBD4.9/45G-L	45	125	400	450	335	217	177	30	245	257.5	1197.5	366	620	310	290	340	4-Φ19
XBD6.0/45G-L	55	125	400	490	365	217	177	30	245	317.5	1332.5	389	620	310	290	340	4-Φ19
XBD7.0/45G-L	75	125	550	550	400	272	248	30	245	328	1418	408	800	400	290	340	4-Φ19
XBD8.3/45G-L	90	125	550	550	400	272	248	30	245	328	1463	408	800	400	290	340	4-Φ19

● Performance parameter table :

Model	Flow (L/s)	Pressure (MPa)	Rotating speed (r/min)	Power (kW)	Weight (kg)
XBD4.9/45G-L	0	0.55	2900	45	437
	45	0.49			
	67.5	0.48			
XBD6.0/45G-L	0	0.64	2900	55	552
	45	0.60			
	67.5	0.57			
XBD7.0/45G-L	0	0.77	2900	75	740
	45	0.70			
	67.5	0.67			
XBD8.3/45G-L	0	0.88	2900	90	820
	45	0.83			
	67.5	0.76			

● Dimensions :



● Installation size table :

● Flange size table :

DN	D1	D2	D3	n-Φd
125	184	210	250	8-Φ18

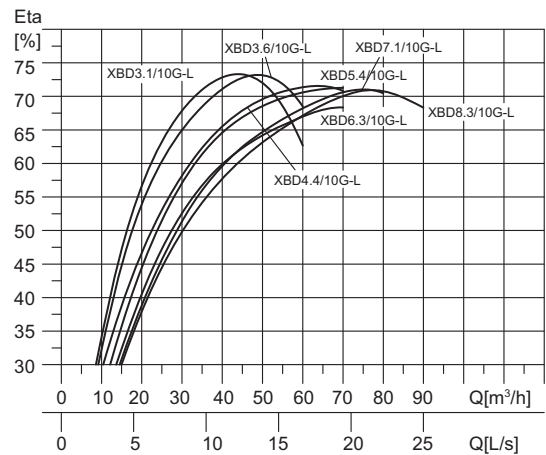
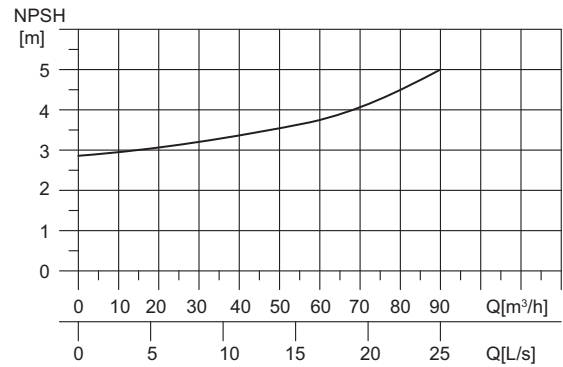
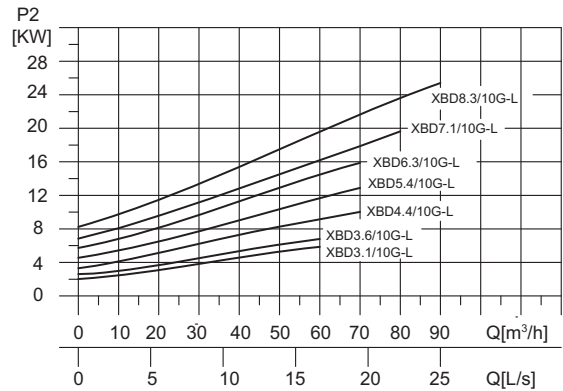
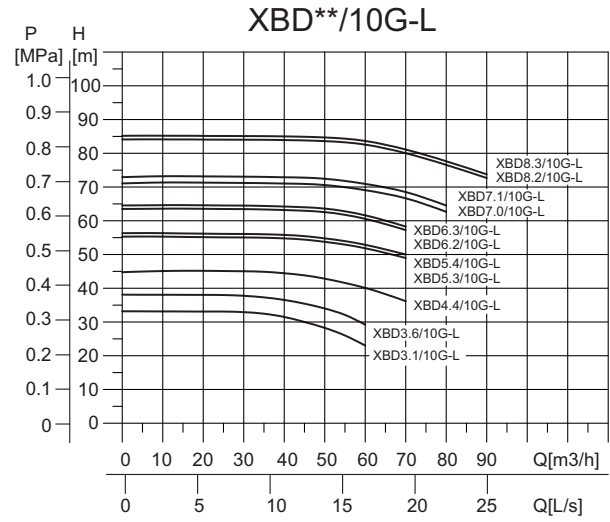
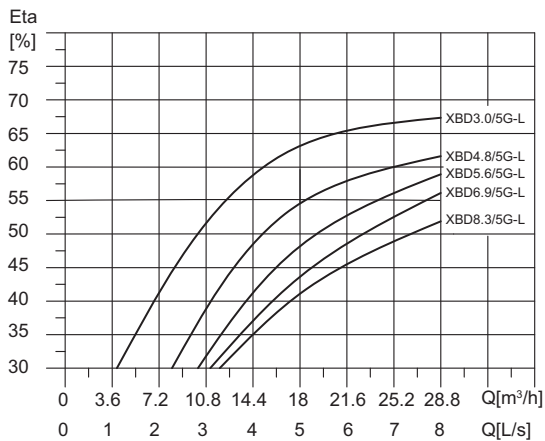
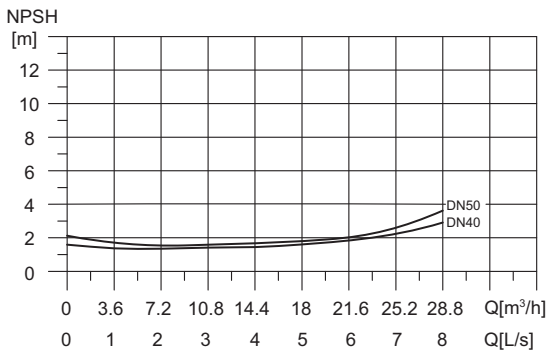
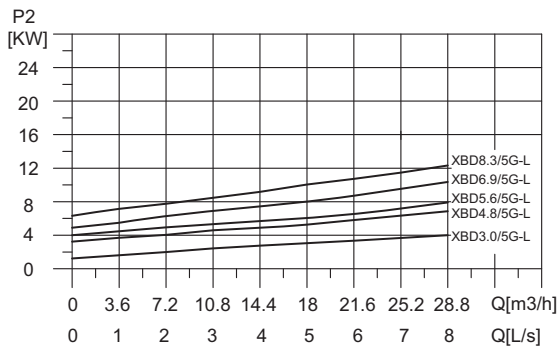
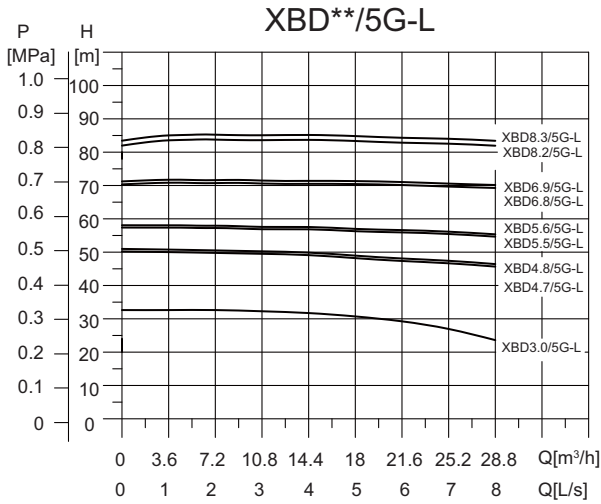
Model	Power(kW)	DN	D	B1	B2	B3	B4	C	H1	H2	H3	H4	L1	L2	e	f	4-Φk
XBD4.8/50G-L	45	125	400	450	335	217	177	30	245	257.5	1197.5	366	620	310	290	340	4-Φ19
XBD6.0/50G-L	55	125	400	490	365	217	177	30	245	317.5	1332.5	389	620	310	290	340	4-Φ19
XBD7.0/50G-L	75	125	550	550	400	272	248	30	245	328	1418	408	800	400	290	340	4-Φ19
XBD8.3/50G-L	90	125	550	550	400	272	248	30	245	328	1463	408	800	400	290	340	4-Φ19

● Performance parameter table :

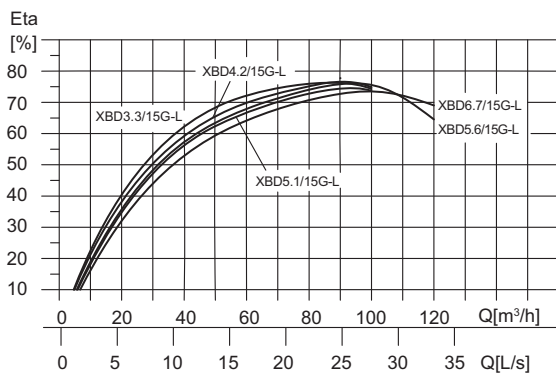
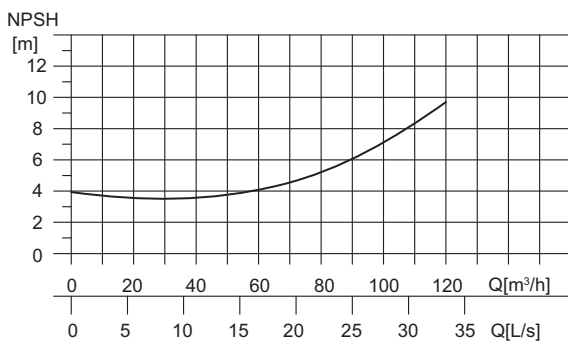
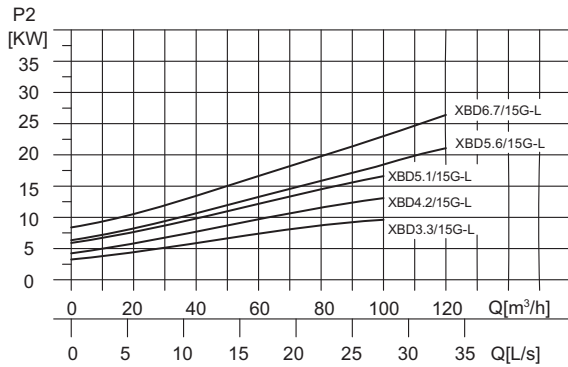
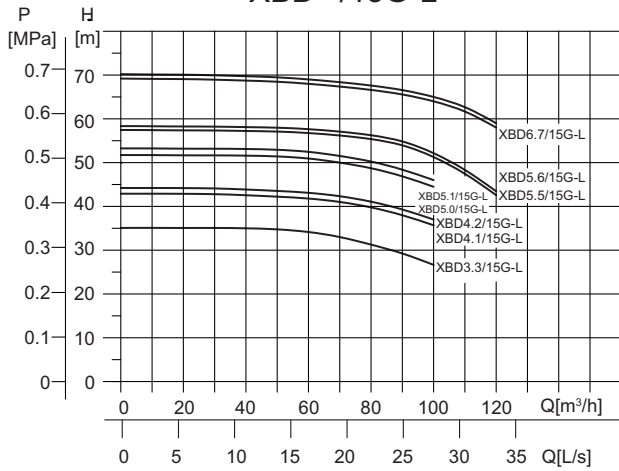
Model	Flow (L/s)	Pressure (MPa)	Rotating speed (r/min)	Power (kW)	Weight (kg)
XBD4.8/50G-L	0	0.55	2900	45	437
	50	0.48			
	75	0.42			
XBD6.0/50G-L	0	0.64	2900	55	552
	50	0.60			
	75	0.52			
XBD7.0/50G-L	0	0.77	2900	75	740
	50	0.70			
	75	0.65			
XBD8.3/50G-L	0	0.88	2900	90	820
	50	0.83			
	75	0.75			



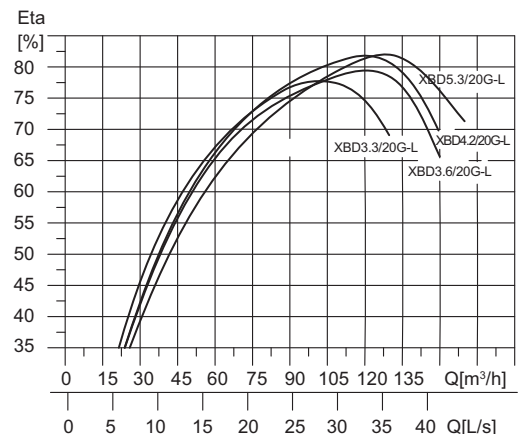
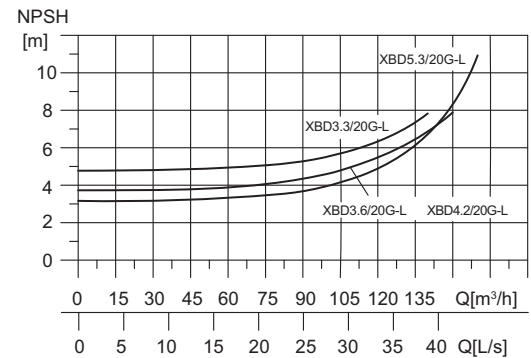
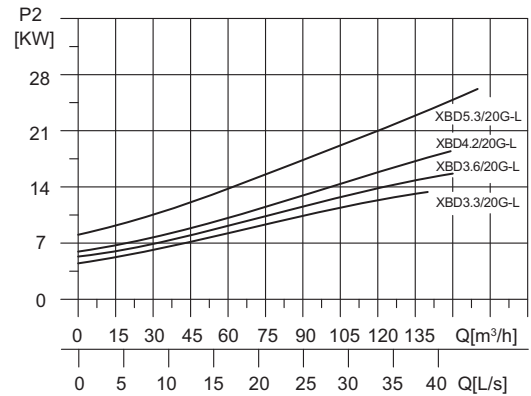
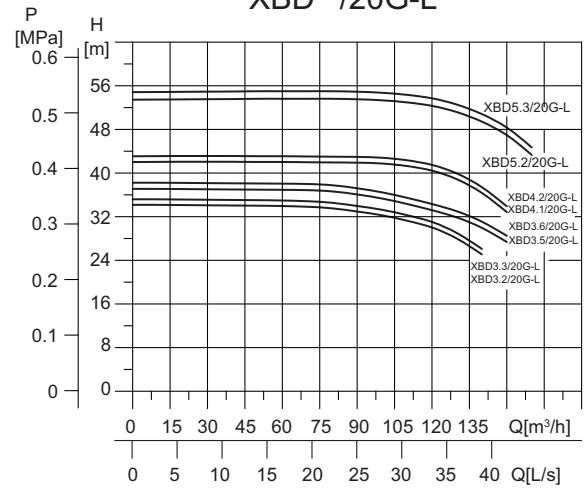
● Performance graph :

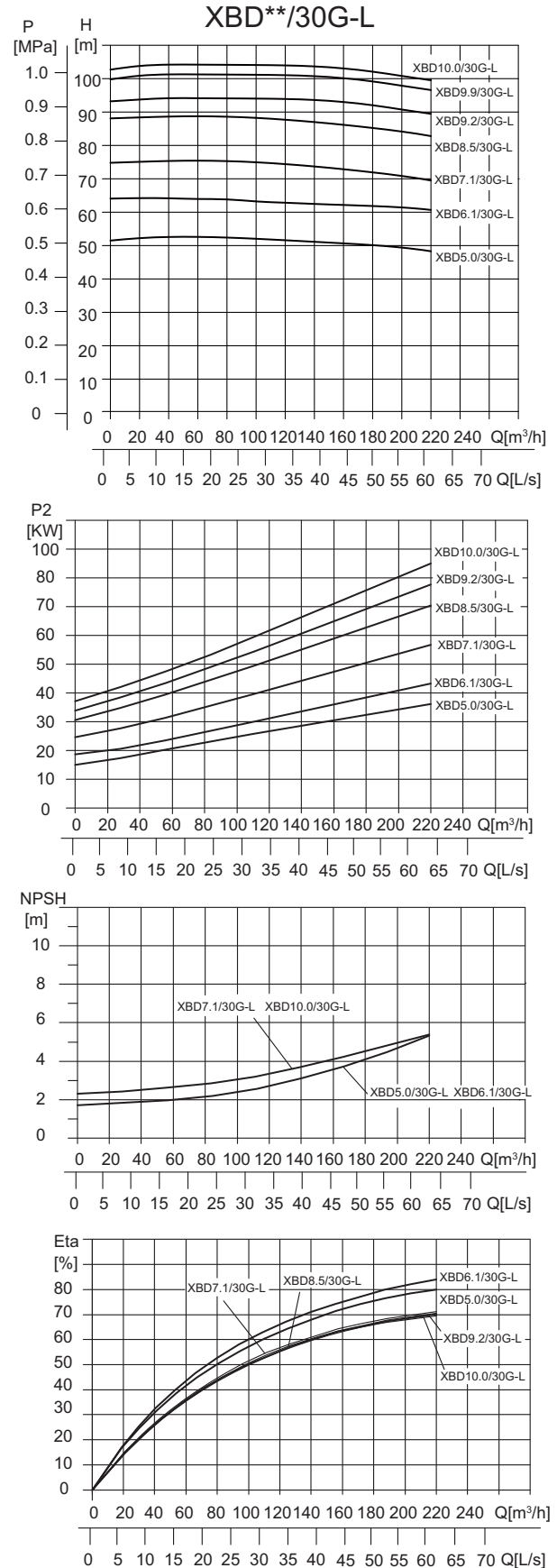
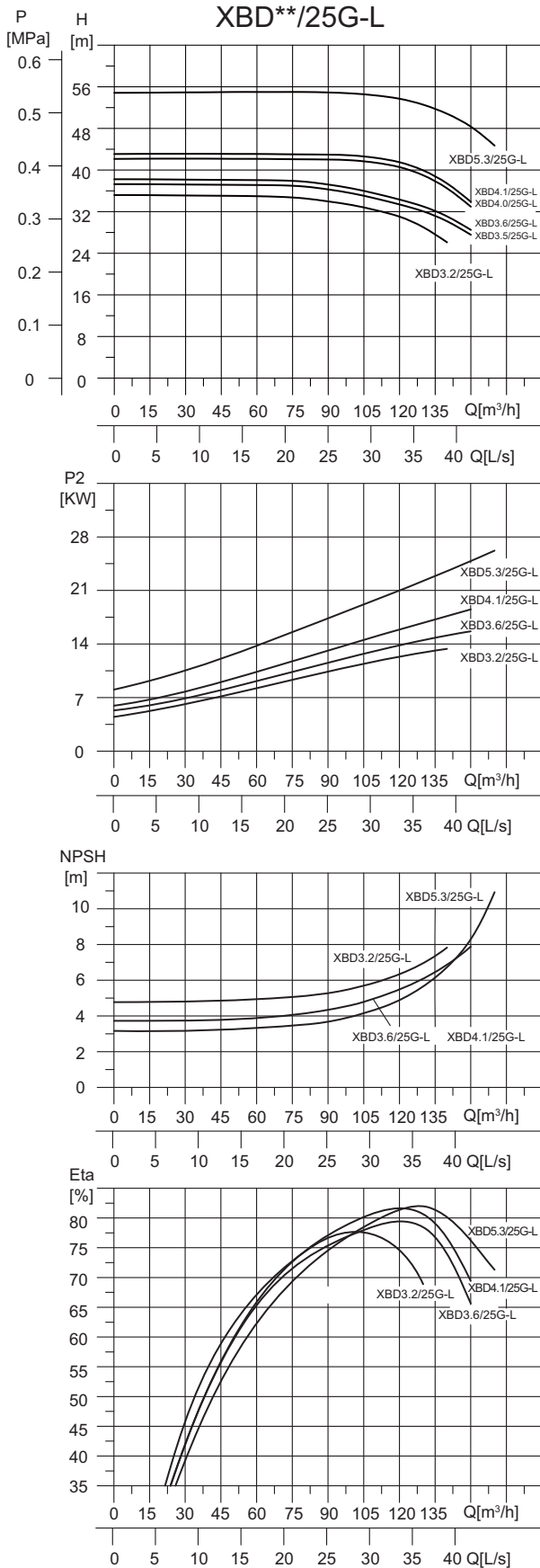


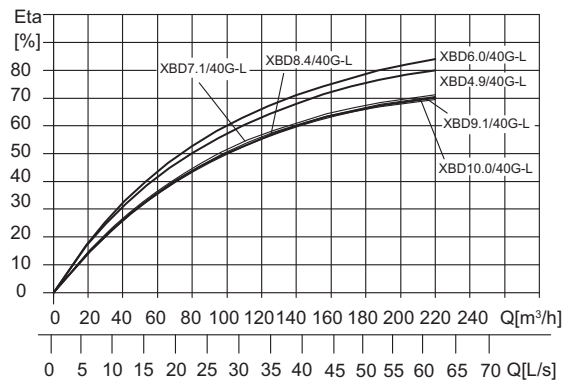
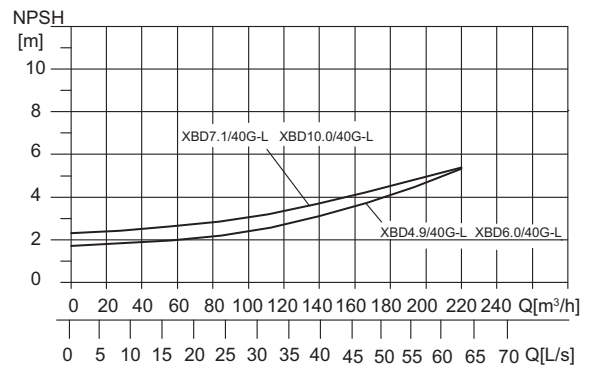
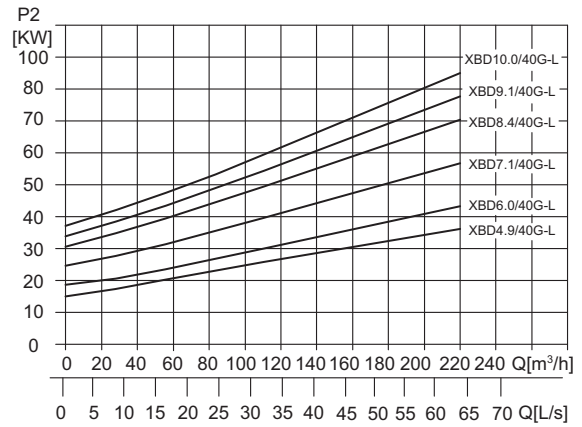
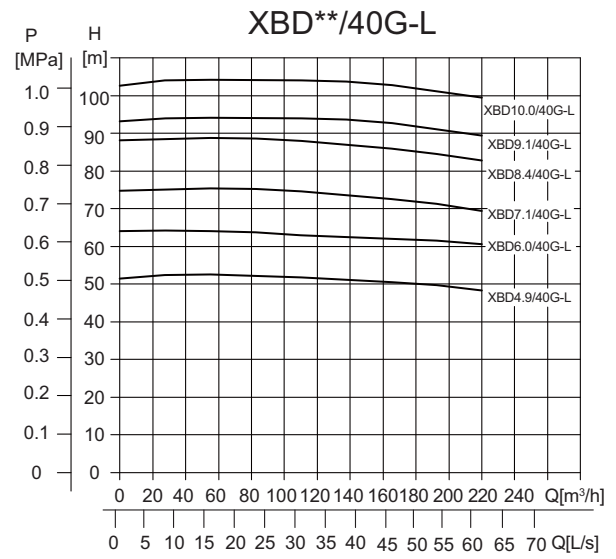
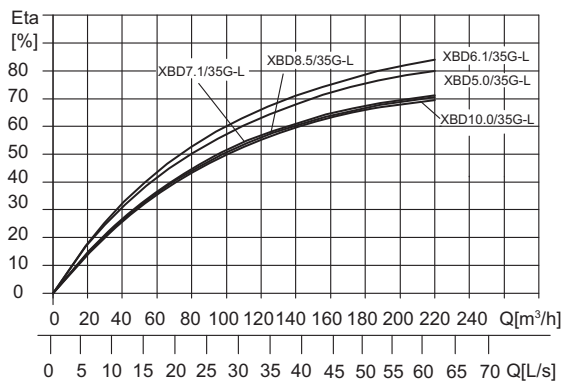
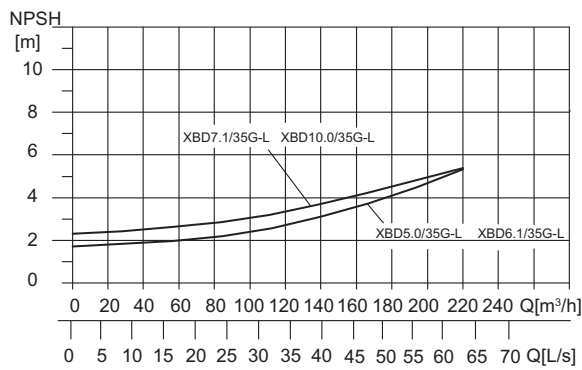
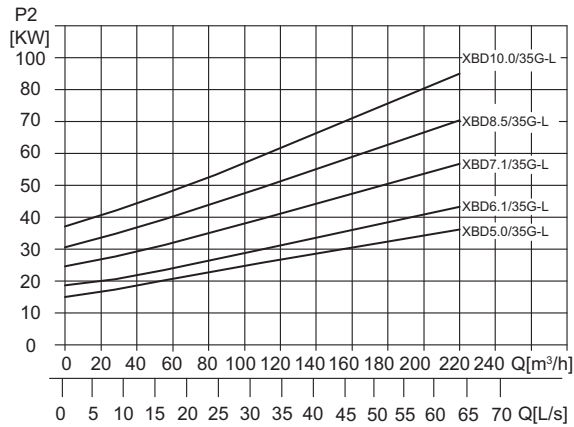
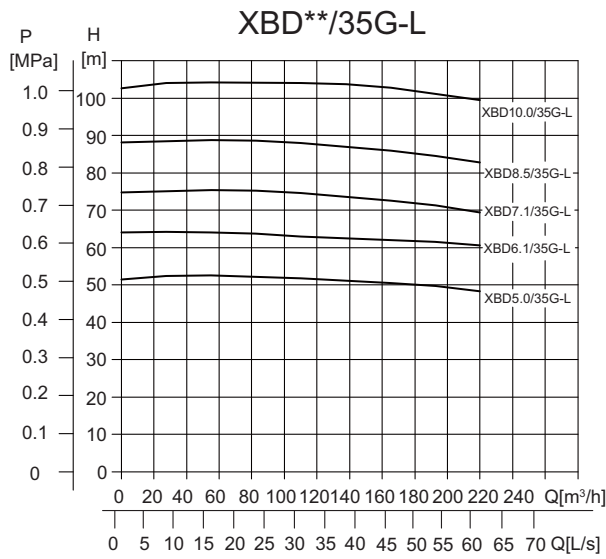
XBD\*\*/15G-L

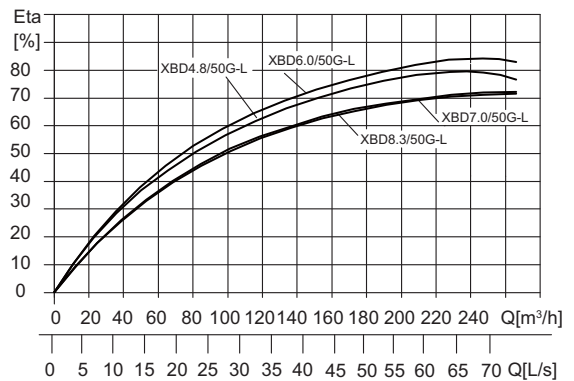
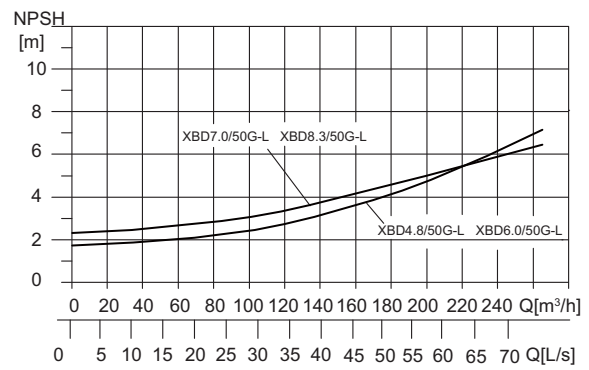
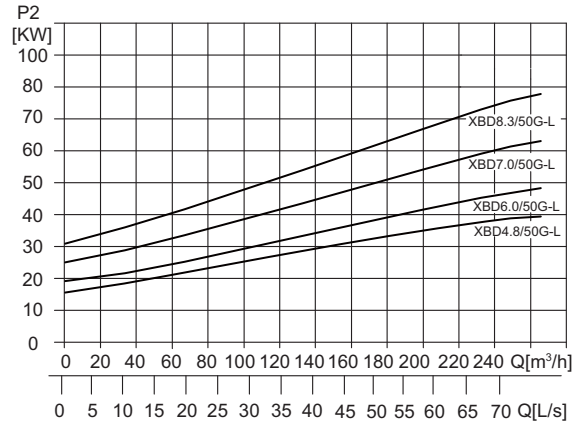
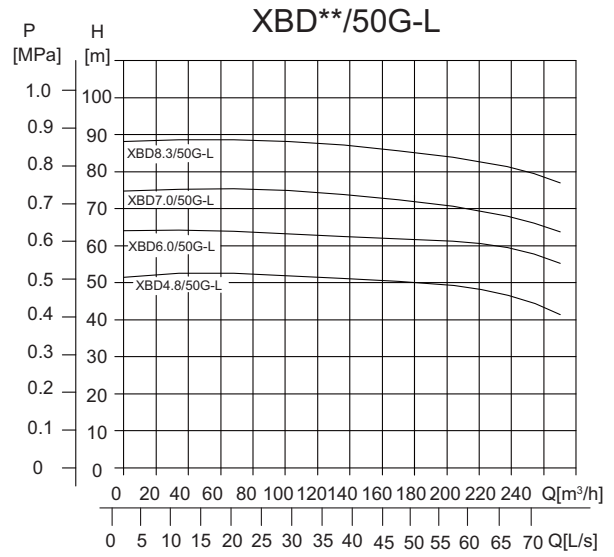
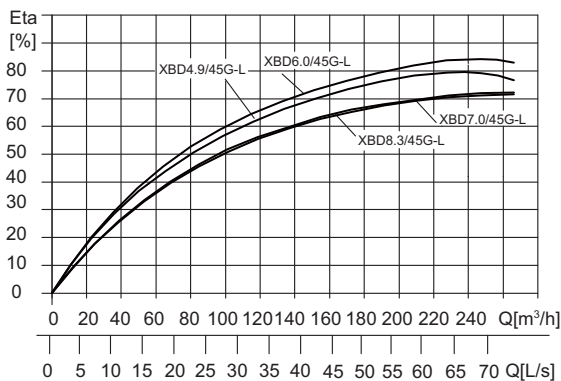
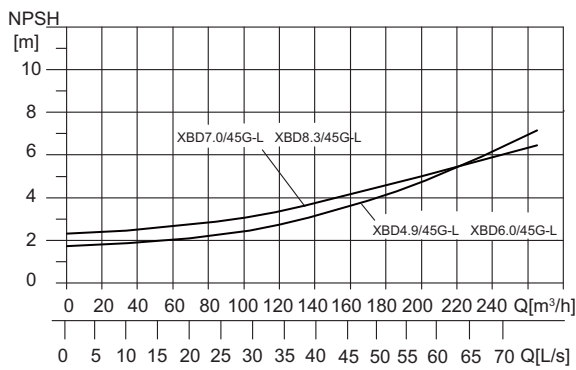
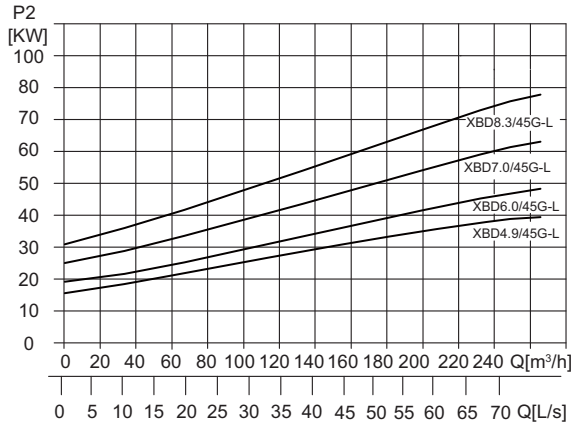
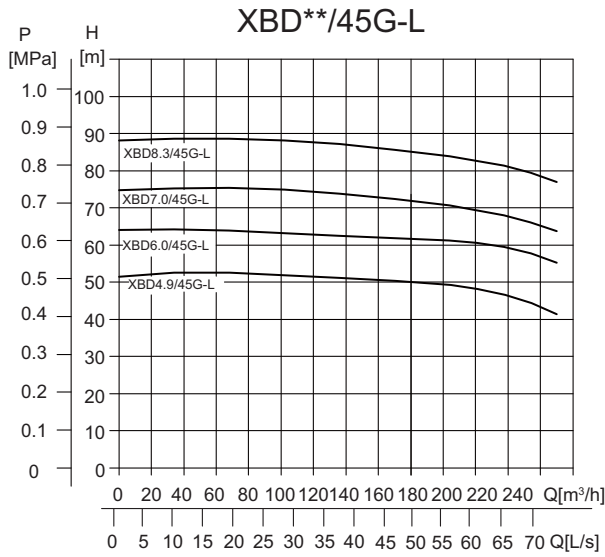


XBD\*\*/20G-L









dooch



## **XBD** SERIES

Vertical multi-stage  
fire fighting pump set

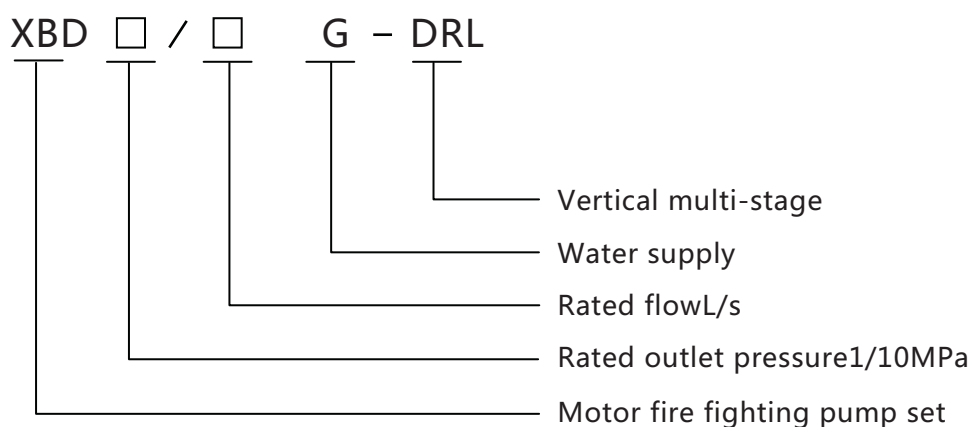
- Product description:

XBD series vertical multi-stage motor fire fighting pump set adopt advanced design and technology, which have high reliability, energy saving, high efficiency and low vibration. Long operating life, flexible installation and easy maintenance, etc. The sleeve is made of 304 high quality stainless steel. The shaft seal adopts wear-resistant mechanical seal, which have no leakage and long service life. The pump runs smoothly, the noise is low, and the installation conditions are better than the DL type pump. The product is fully compliant and meets national standards "CNCA-C18-03: 2014 Fire Extinguishing Equipment Product Compulsory Certification Implementation Rules", "CCCF-MHSB-08(A / 0) Mandatory product certification implementation rules & Fire extinguishing equipment products & Fire fighting water supply equipment products", "GB6245-2006 fire fighting pump" standard requirements, the products have been tested by the National Fire Equipment Quality Supervision and Inspection Center, and the products have reached the domestic leading level.

- Working conditions:

Rotating speed	2900 r/min
Liquid temperature	≤80°C Plain water
Flow range	5 ~ 45 L/s
Pressure range	0.34 ~ 1.48 MPa

- Model Description:



- Main components material

Part name	Materials	
Inlet&outlet chamber	Cast iron HT250	GB/T 9439
Pump head bracket	Ductile iron QT450	GB/T 1348
Impeller, diffuser middle section	Stainless steel 06Cr19Ni10	GB/T 20878
Shaft	Stainless steel 06Cr19Ni10	GB/T 20878
Shaft seal	Mechanical seal	

- Motor:

IEC standard、 2 pole motor ( Motor type:TEFC )	
Voltage	380V
Frequency	50HZ
Protection class	IP55
Insulation class	F class
Installation type	Round flange
Special motor supply as required	

- Order parameters:

- Pump
  - Pump model
  - Flow
  - Pressure
  - Material requirements
- Motor
  - Protection class
  - Insulation class
- Accessories
  - Vibration isolator (isolation pad)

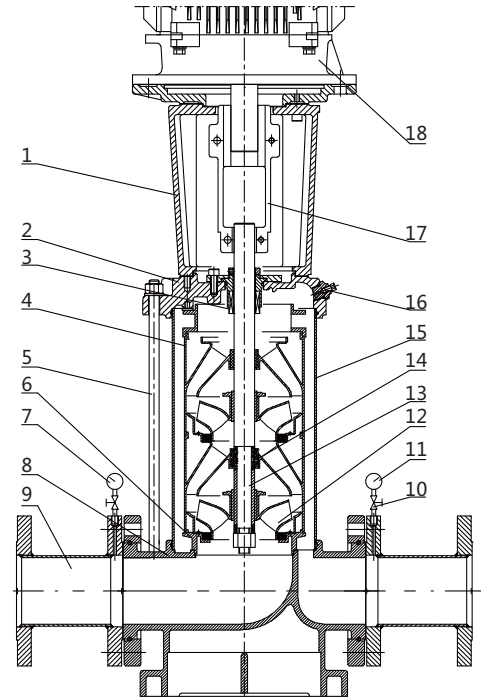
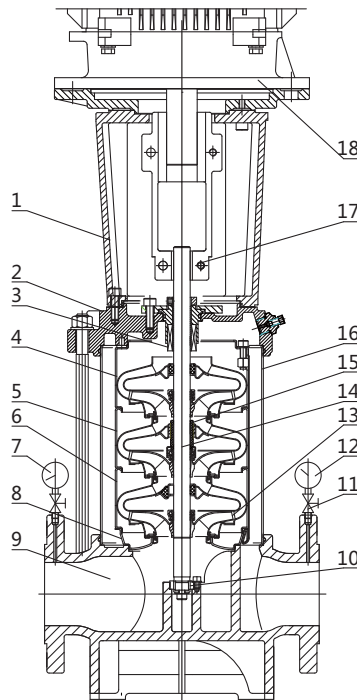
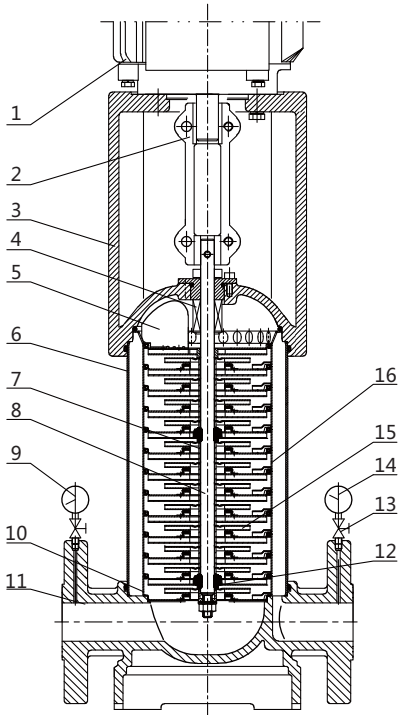


● Structure diagram

XBD3.4/5G-DRL~XBD14.0/5G-DRL

XBD4.0/10G-DRL~ XBD13.2/15G-DRL

XBD4.2/20G-DRL~ XBD14.3/45G-DRL

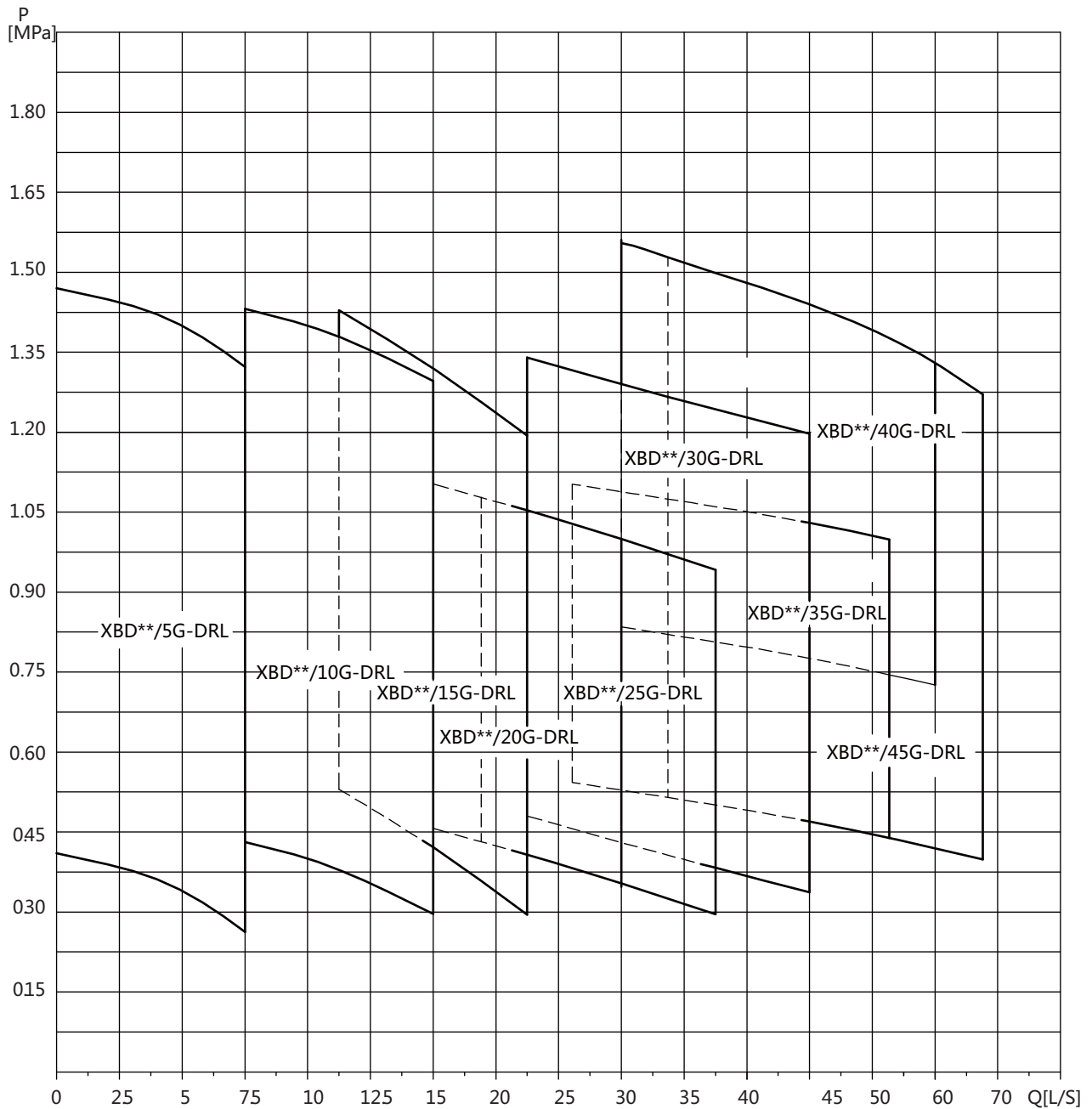


S/N	Name
1	Motor
2	Coupling
3	Bracket
4	Mechanical seal
5	Outlet diffuser
6	Sleeve
7	Spacer
8	Shaft
9	Vacuum gauge
10	Inlet diffuser
11	Inlet&outlet chamber
12	Bearing
13	Globe valve
14	Pressure gauge
15	Impeller
16	Diffuser

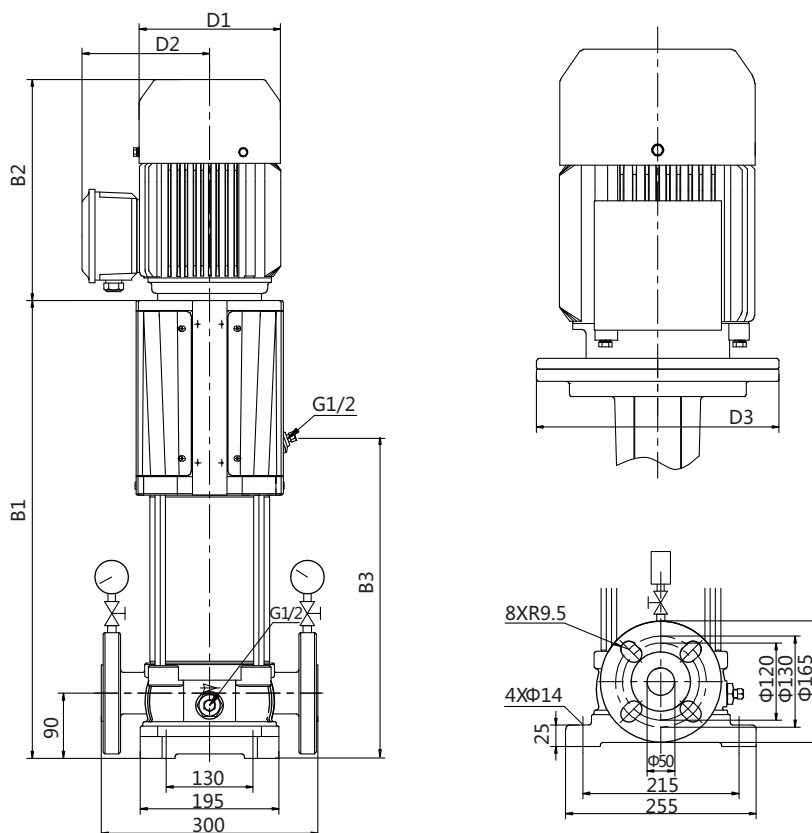
S/N	Name
1	Bracket
2	Pump head
3	Mechanical seal
4	Outlet diffuser
5	Bearing diffuser
6	Diffuser
7	Vacuum gauge
8	Diffuser holder
9	Inlet&outlet chamber
10	End bearing
11	Globe valve
12	Pressure gauge
13	Impeller
14	Shaft
15	Intermediate bearing
16	Sleeve
17	Coupling
18	Motor

S/N	Name
1	Bracket
2	Pump head
3	Mechanical seal
4	Outlet diffuser
5	Tie rod
6	Inlet diffuser
7	Vacuum gauge
8	Inlet&outlet chamber
9	Short tube
10	Globe valve
11	Pressure gauge
12	Impeller
13	Shaft
14	Bearing
15	Sleeve
16	Airvent valve
17	Coupling
18	Motor

## ● Type diagram :



● Dimensional drawing :



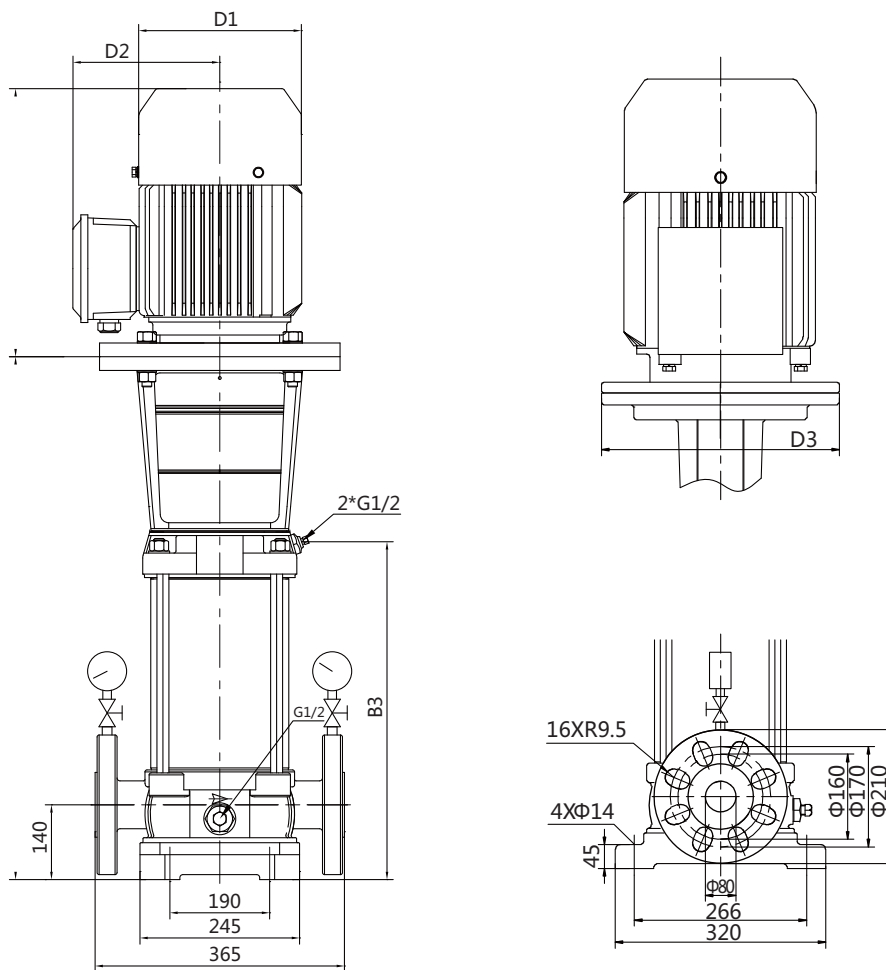
● Installation size table :

XBD**/5G-DRL	Model	DN	B1	B1+B2	B3	D1	D2	D3
	XBD3.4/5G-DRL	50	523	863	356	220	195	-
	XBD5.8/5G-DRL	50	633	1016	446	260	215	-
	XBD8.3/5G-DRL	50	723	1106	536	260	215	-
	XBD10.6/5G-DRL	50	843	1348	626	320	260	350
	XBD14.0/5G-DRL	50	978	1483	761	320	260	350

● Performance parameter table :

XBD**/5G-DRL	Model	Flow ( L/s )	Pressure ( MPa )	Speed ( r/min )	Power ( kW )	Weight ( kg )
	XBD3.4/5G-DRL	0	0.41	2900	4	83
		5	0.34			
		7.5	0.24			
	XBD5.8/5G-DRL	0	0.69	2900	5.5	102
		5	0.58			
		7.5	0.39			
	XBD8.3/5G-DRL	0	0.99	2900	7.5	107
		5	0.83			
		7.5	0.58			
	XBD10.6/5G-DRL	0	1.27	2900	11	175
		5	1.06			
		7.5	0.71			
	XBD14.0/5G-DRL	0	1.65	2900	15	188
		5	1.40			
7.5		0.93				

● Dimensional drawing :



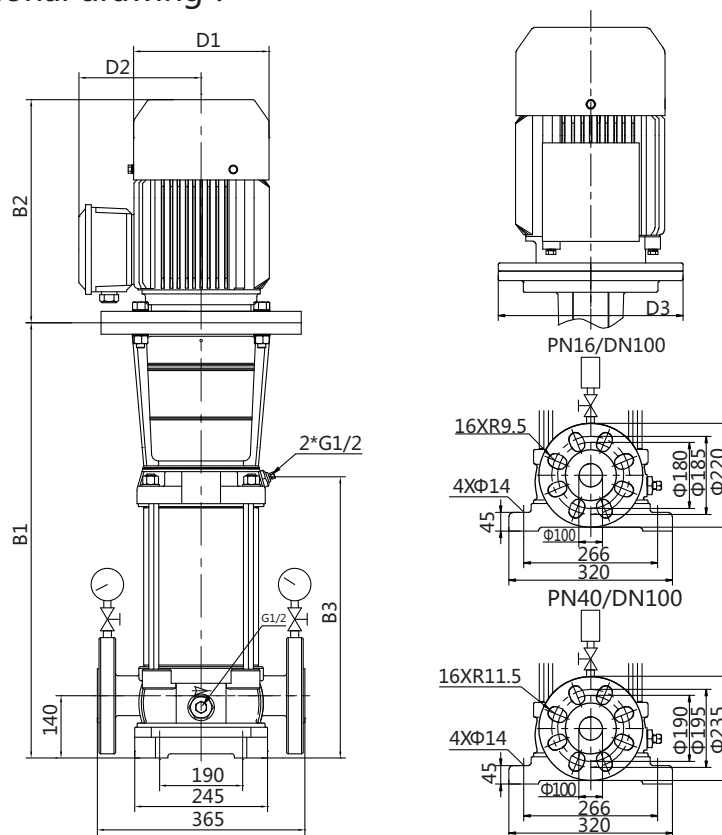
● Installation size table :

	Model	DN	B1	B1+B2	B3	D1	D2	D3
XBD**/10G-DRL	XBD4.0/10G-DRL	80	709	1088	422	260	159	-
	XBD8.3/10G-DRL	80	899	1370	582	314	204	350
	XBD12.6/10G-DRL	80	1059	1600	742	314	204	350
	XBD14.0/10G-DRL	80	1139	1749	822	402	300	400

● Performance parameter table :

	Model	Flow ( L/s )	Pressure ( MPa )	Speed ( r/min )	Power ( kW )	Weight ( kg )
XBD**/10G-DRL	XBD4.0/10G-DRL	0	0.48	2900	7.5	112
		10	0.40			
		15	0.27			
	XBD8.3/10G-DRL	0	0.98	2900	15	186
		10	0.83			
		15	0.59			
	XBD12.6/10G-DRL	0	1.42	2900	22	224
		10	1.26			
		15	0.88			
	XBD14.0/10G-DRL	0	1.59	2900	30	330
		10	1.40			
		15	0.98			

● Dimensional drawing :



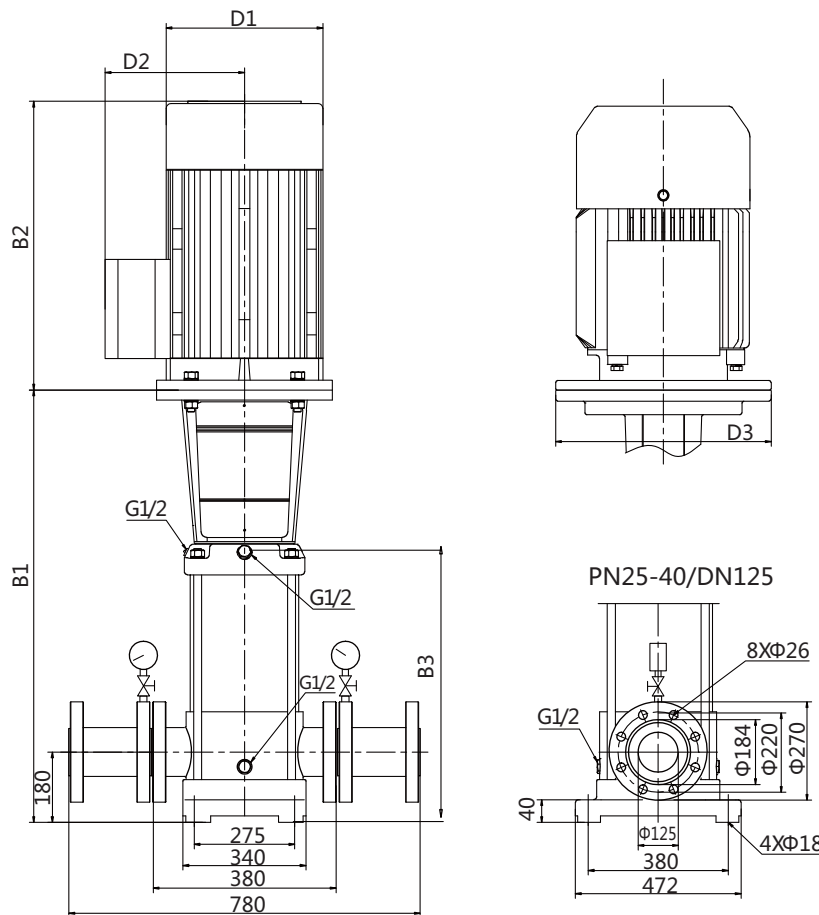
● Installation size table :

	Model	DN	B1	B1+B2	B3	D1	D2	D3
XBD**/15G-DRL	XBD4.2/15G-DRL	100	744	1215	427	314	204	350
	XBD6.7/15G-DRL	100	826	1341	510	314	204	350
	XBD9.0/15G-DRL	100	909	1450	594	314	204	350
	XBD11.0/15G-DRL	100	991	1600	675	402	300	400
	XBD13.2/15G-DRL	100	1074	1741	757	402	300	400

● Performance parameter table :

	Model	Flow ( L/s )	Pressure ( MPa )	Speed ( r/min )	Power ( kW )	Weight ( kg )
XBD**/15G-DRL	XBD4.2/15G-DRL	0	0.54	2900	11	163
		15	0.42			
		22.5	0.28			
	XBD6.7/15G-DRL	0	0.83	2900	18.5	193
		15	0.67			
		22.5	0.49			
	XBD9.0/15G-DRL	0	1.08	2900	22	211
		15	0.90			
		22.5	0.66			
	XBD11.0/15G-DRL	0	1.35	2900	30	318
		15	1.10			
		22.5	0.81			
	XBD13.2/15G-DRL	0	1.57	2900	37	355
		15	1.32			
		22.5	0.98			

- Dimensional drawing :



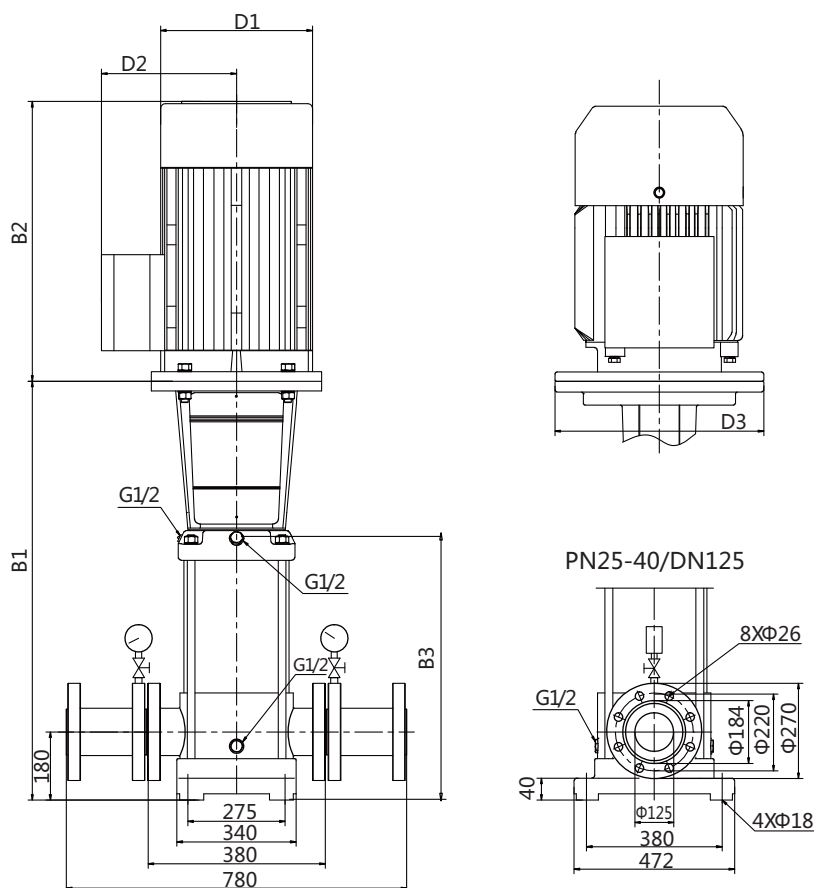
- Installation size table :

	Model	DN	B1	B1+B2	B3	D1	D2	D3
XBD**/20G-DRL	XBD4.2/20G-DRL	125	1000	1575	676	360	285	350
	XBD6.3/20G-DRL	125	1160	1810	836	400	310	400
	XBD8.4/20G-DRL	125	1320	2005	996	460	340	450
	XBD10.7/20G-DRL	125	1510	2270	1156	540	370	550

- Performance parameter table :

	Model	Flow ( L/s )	Pressure ( MPa )	Speed ( r/min )	Power ( kW )	Weight ( kg )
XBD**/20G-DRL	XBD4.2/20G-DRL	0	0.47	2900	22	303
		20	0.42			
		30	0.38			
	XBD6.3/20G-DRL	0	0.67	2900	30	378
		20	0.63			
		30	0.59			
	XBD8.4/20G-DRL	0	0.91	2900	45	478
		20	0.84			
		30	0.79			
	XBD10.7/20G-DRL	0	1.16	2900	55	593
		20	1.07			
		30	0.99			

● Dimensional drawing :



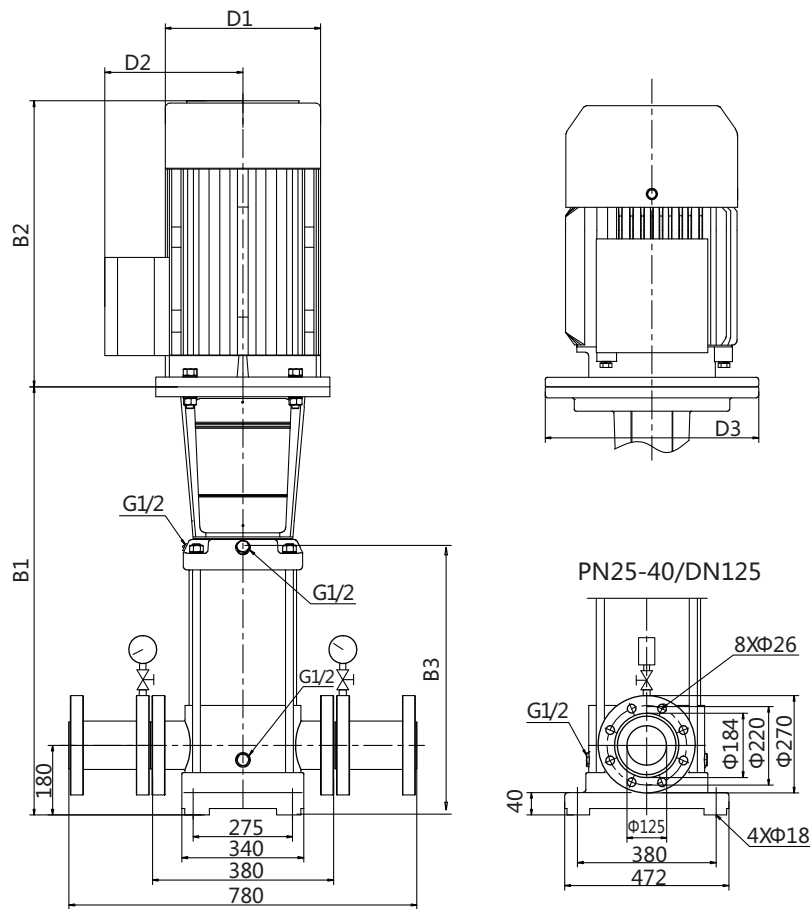
● Installation size table :

	Model	DN	B1	B1+B2	B3	D1	D2	D3
XBD**/25G-DRL	XBD3.9/25G-DRL	125	1000	1575	676	360	285	350
	XBD6.0/25G-DRL	125	1160	1810	836	400	310	400
	XBD8.1/25G-DRL	125	1320	2005	996	460	340	450
	XBD10.3/25G-DRL	125	1510	2270	1156	540	370	550

● Performance parameter table :

	Model	Flow ( L/s )	Pressure ( MPa )	Speed ( r/min )	Power ( kW )	Weight ( kg )
XBD**/25G-DRL	XBD3.9/25G-DRL	0	0.47	2900	22	303
		25	0.39			
		37.5	0.35			
	XBD6.0/25G-DRL	0	0.67	2900	30	378
		25	0.60			
		37.5	0.51			
	XBD8.1/25G-DRL	0	0.91	2900	45	478
		25	0.81			
		37.5	0.68			
XBD10.3/25G-DRL	0	1.16	2900	55	593	
	25	1.03				
	37.5	0.86				

● Dimensional drawing :



● Installation size table :

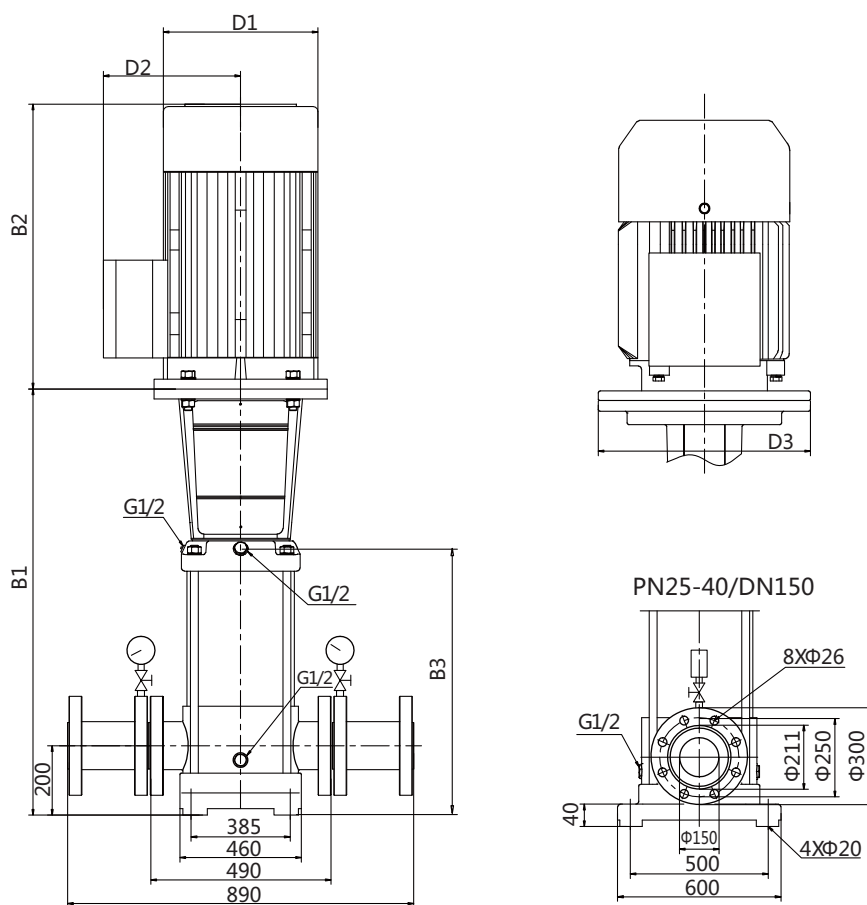
	Model	DN	B1	B1+B2	B3	D1	D2	D3
XBD**/30G-DRL	XBD4.3/30G-DRL	125	1000	1650	676	400	310	400
	XBD6.4/30G-DRL	125	1160	1810	836	400	310	400
	XBD8.6/30G-DRL	125	1350	2110	996	540	370	550
	XBD12.9/30G-DRL	125	1670	2515	1316	580	410	550

● Performance parameter table :

	Model	Flow ( L/s )	Pressure ( MPa )	Speed ( r/min )	Power ( kW )	Weight ( kg )
XBD**/30G-DRL	XBD4.3/30G-DRL	0	0.51	2900	30	368
		30	0.43			
		45	0.34			
	XBD6.4/30G-DRL	0	0.78	2900	37	403
		30	0.64			
		45	0.51			
	XBD8.6/30G-DRL	0	1.01	2900	55	578
		30	0.86			
		45	0.68			
	XBD12.9/30G-DRL	0	1.49	2900	75	718
		30	1.29			
		45	1.04			



● Dimensional drawing :



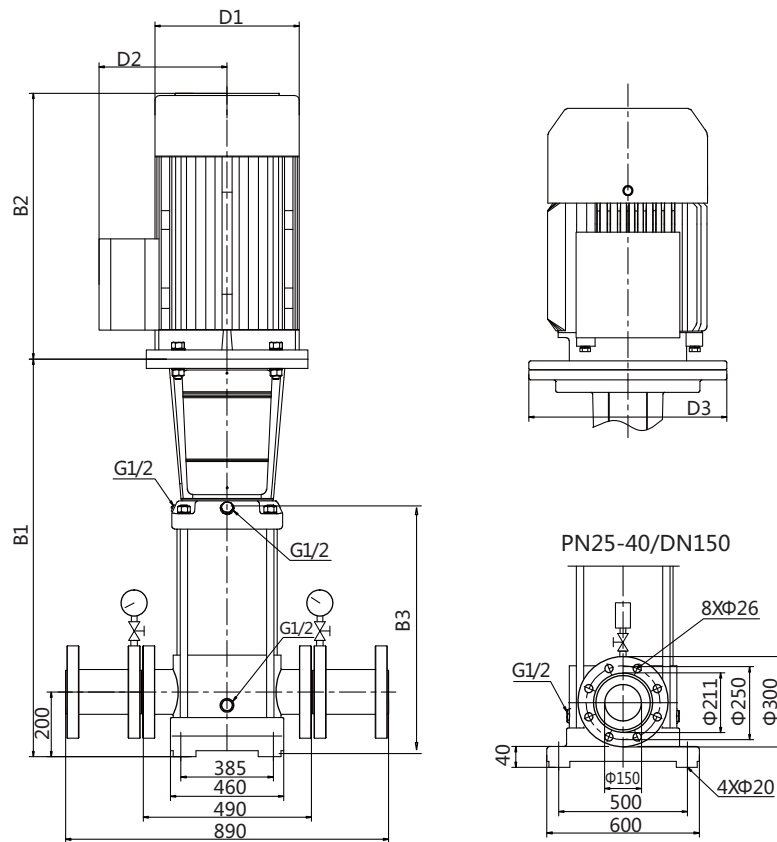
● Installation size table :

	Model	DN	B1	B1+B2	B3	D1	D2	D3
<b>XBD**/35G-DRL</b>	XBD5.1/35G-DRL	150	1101	1786	779	460	340	450
	XBD7.1/35G-DRL	150	1131	1891	779	540	370	550
	XBD9.8/35G-DRL	150	1325	2170	974	580	410	550
	XBD10.7/35G-DRL	150	1325	2220	974	580	410	550

● Performance parameter table :

	Model	Flow ( L/s )	Pressure ( MPa )	Speed ( r/min )	Power ( kW )	Weight ( kg )
<b>XBD**/35G-DRL</b>	XBD5.1/35G-DRL	0	0.58	2900	45	527
		35	0.51			
		52.5	0.44			
	XBD7.1/35G-DRL	0	0.78	2900	55	618
		35	0.71			
		52.5	0.64			
	XBD9.8/35G-DRL	0	1.08	2900	75	771
		35	0.98			
		52.5	0.88			
XBD10.7/35G-DRL	0	1.19	2900	90	840	
	35	1.07				
	52.5	1.01				

● Dimensional drawing :



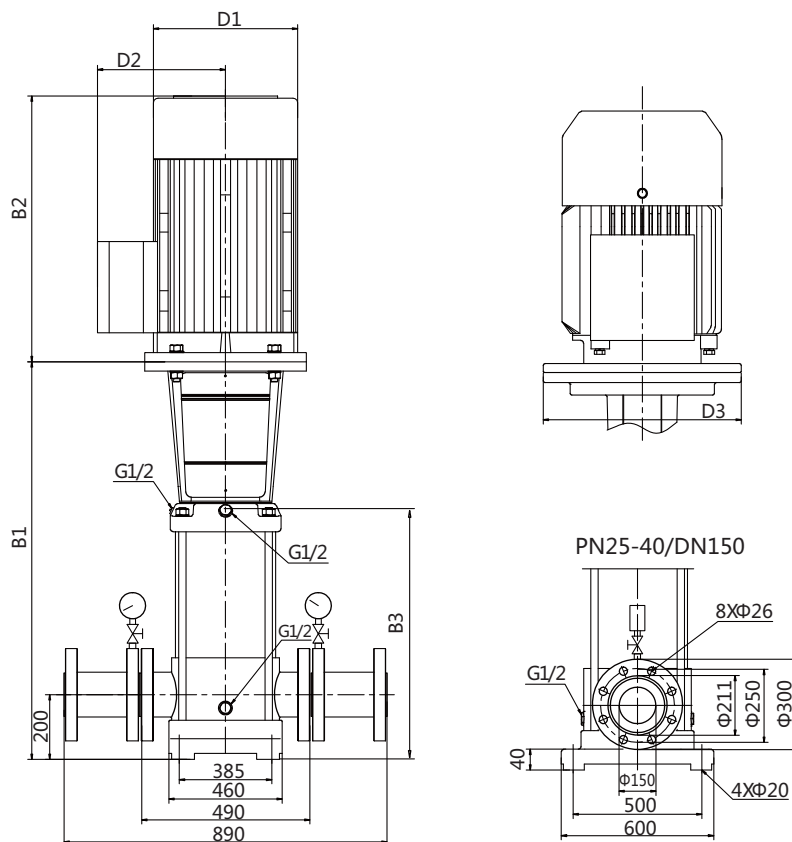
● Installation size table :

	Model	DN	B1	B1+B2	B3	D1	D2	D3
XBD**/40G-DRL	XBD7.8/40G-DRL	150	1325	2170	974	580	410	550
	XBD9.5/40G-DRL	150	1325	2170	974	580	410	550
	XBD11.7/40G-DRL	150	1519	2414	1169	580	410	550
	XBD13.3/40G-DRL	150	1519	2659	1169	645	550	660
	XBD14.8/40G-DRL	150	1519	2659	1169	645	550	660

● Performance parameter table :

	Model	Flow ( L/s )	Pressure ( MPa )	Speed ( r/min )	Power ( kW )	Weight ( kg )
XBD**/40G-DRL	XBD7.8/40G-DRL	0	0.91	2900	75	771
		40	0.78			
		60	0.65			
	XBD9.5/40G-DRL	0	1.08	2900	75	771
		40	0.95			
		60	0.85			
	XBD11.7/40G-DRL	0	1.36	2900	90	853
		40	1.17			
		60	1.01			
	XBD13.3/40G-DRL	0	1.49	2900	110	1203
		40	1.33			
		60	1.17			
XBD14.8/40G-DRL	0	1.65	2900	110	1203	
	40	1.48				
	60	0.31				

● Dimensional drawing :



● Installation size table :

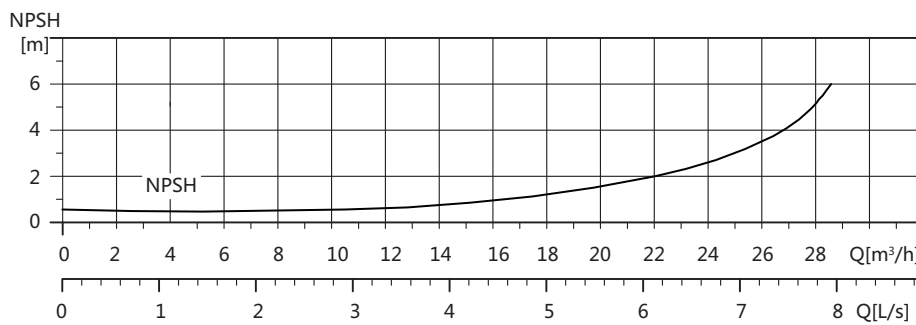
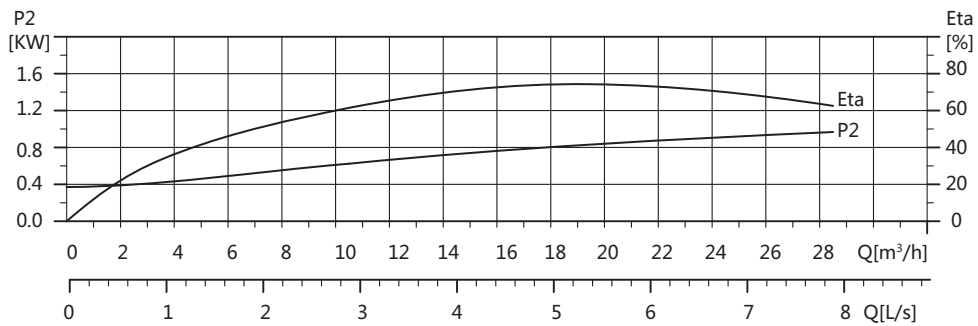
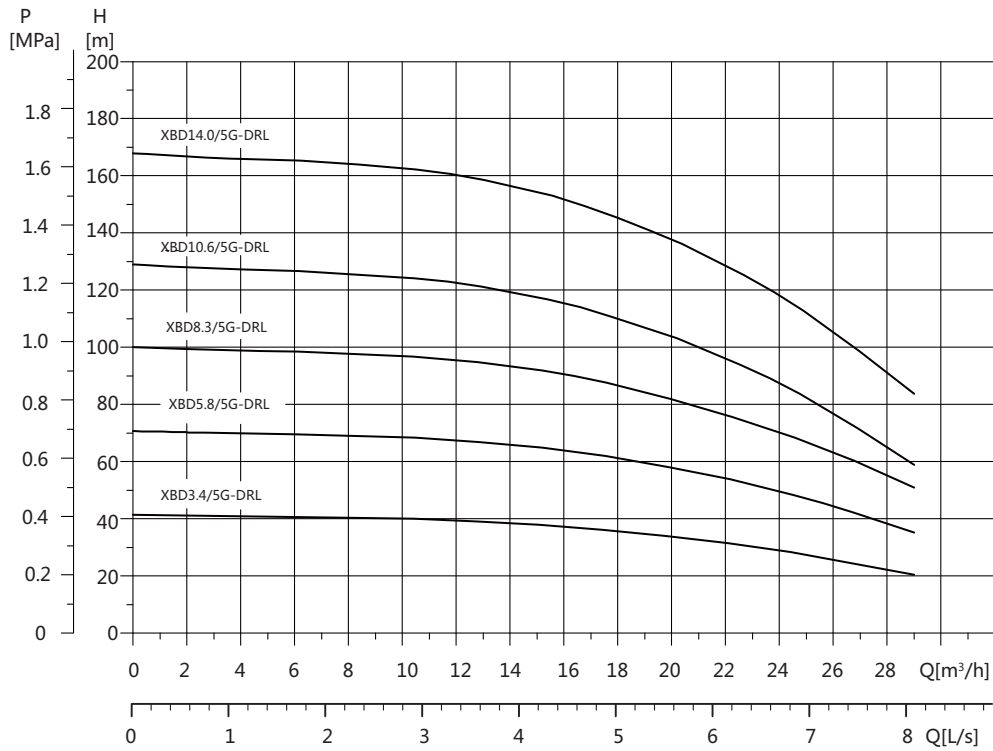
	Model	DN	B1	B1+B2	B3	D1	D2	D3
XBD**/45G-DRL	XBD4.7/45G-DRL	150	1101	1786	779	460	340	450
	XBD6.7/45G-DRL	150	1131	1891	779	540	370	550
	XBD10.2/45G-DRL	150	1325	2220	974	580	410	550
	XBD12.0/45G-DRL	150	1519	2659	1169	645	550	660
	XBD14.3/45G-DRL	150	1519	2659	1169	645	550	660

● Performance parameter table :

	Model	Flow ( L/s )	Pressure ( MPa )	Speed ( r/min )	Power ( kW )	Weight ( kg )
XBD**/45G-DRL	XBD4.7/45G-DRL	0	0.58	2900	45	527
		45	0.47			
		67.5	0.33			
	XBD6.7/45G-DRL	0	0.78	2900	55	618
		45	0.67			
		67.5	0.57			
	XBD10.2/45G-DRL	0	1.19	2900	90	840
		45	1.02			
		67.5	0.88			
	XBD12.0/45G-DRL	0	1.41	2900	110	1203
		45	1.20			
		67.5	0.98			
XBD14.3/45G-DRL	0	1.65	2900	110	1203	
	45	1.43				
	67.5	1.21				

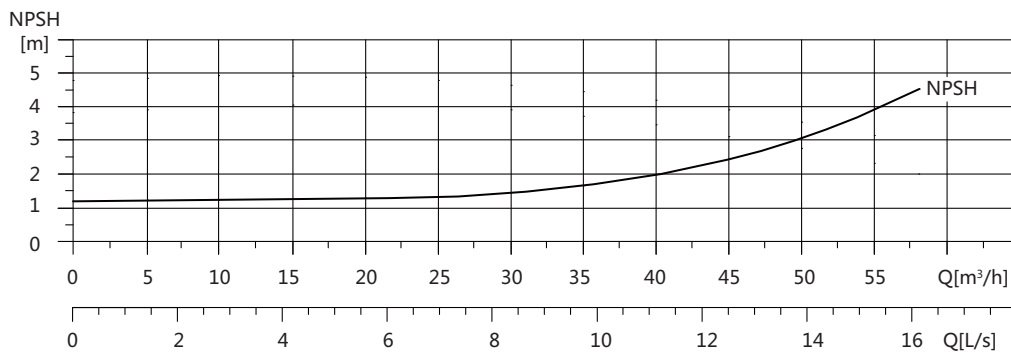
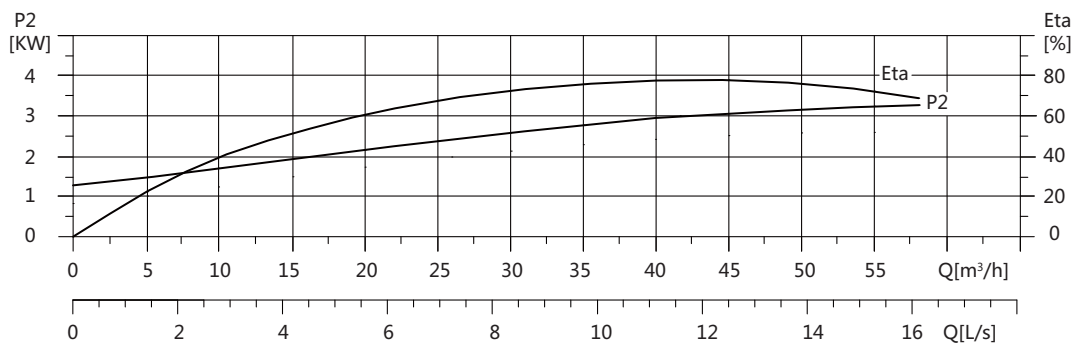
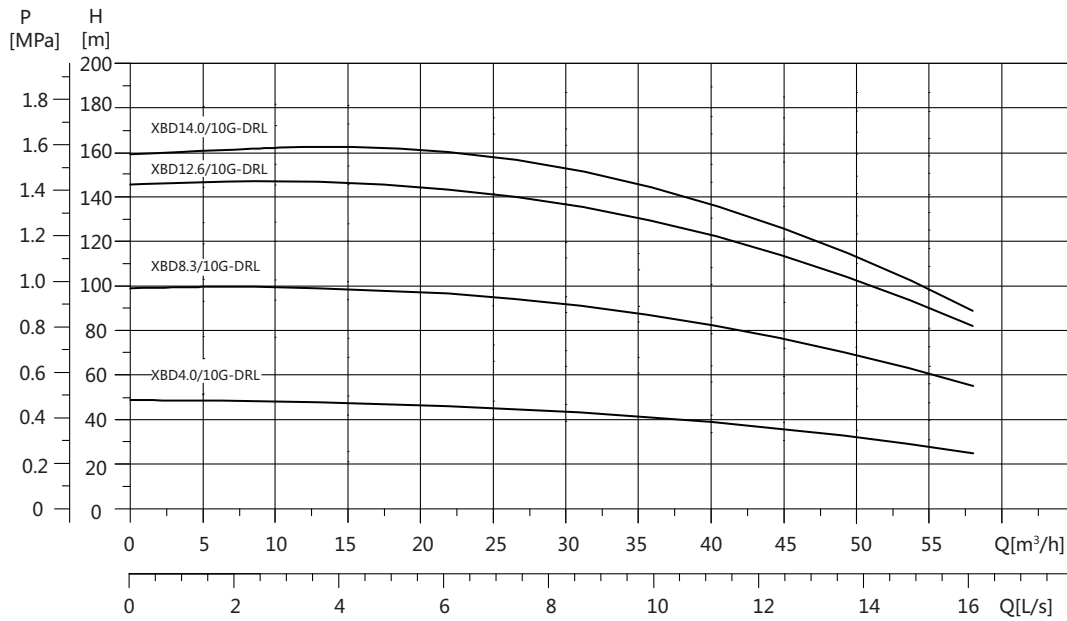
● Performance graph :

XBD\*\*/5G-DRL



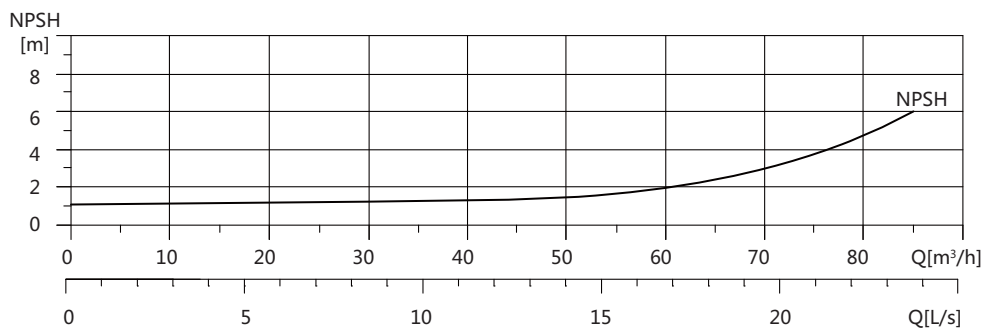
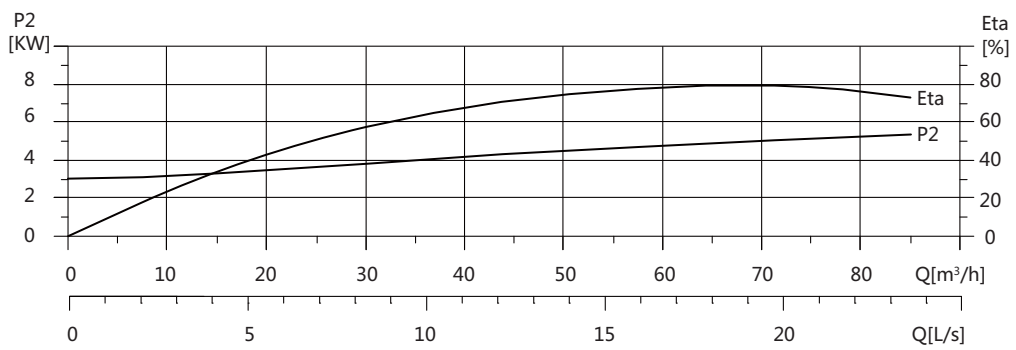
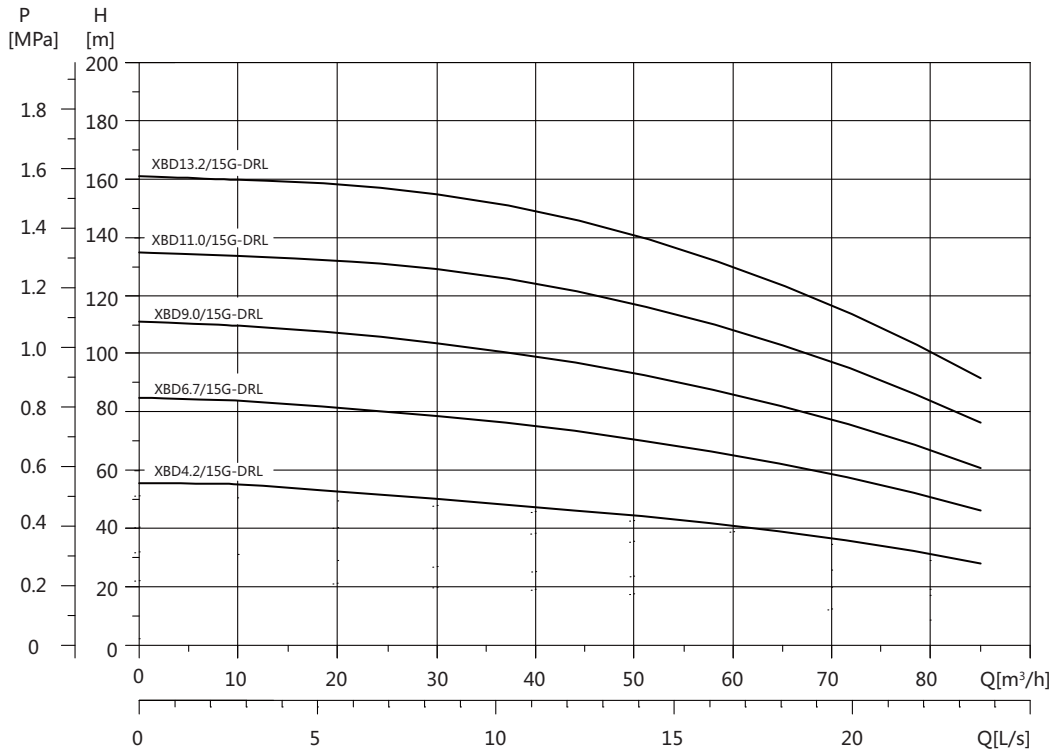
● Performance graph :

XBD\*\*/10G-DRL



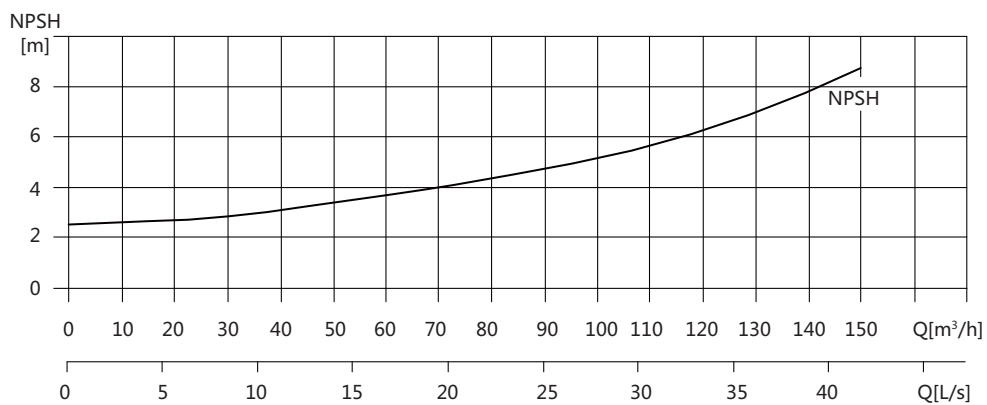
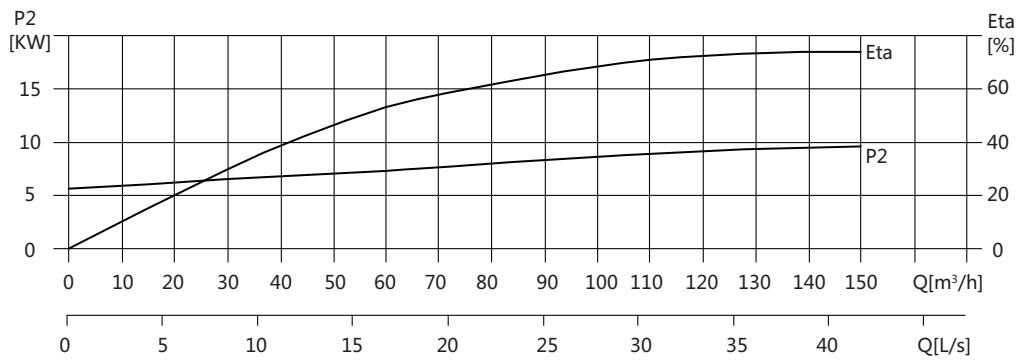
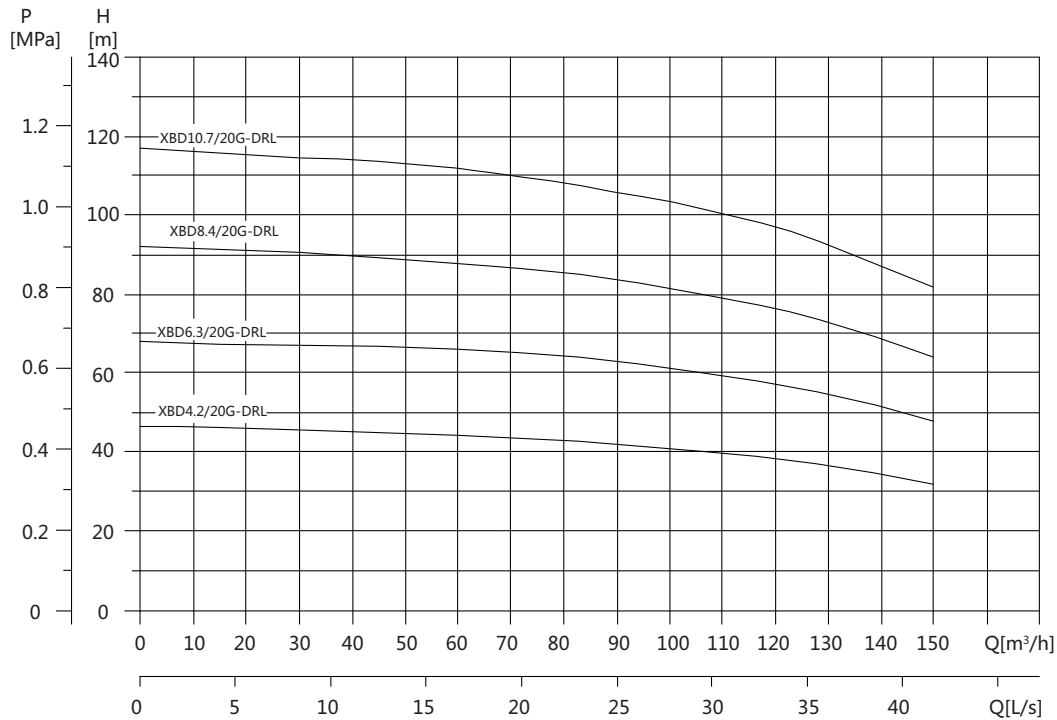
● Performance graph :

XBD\*\*/15G-DRL



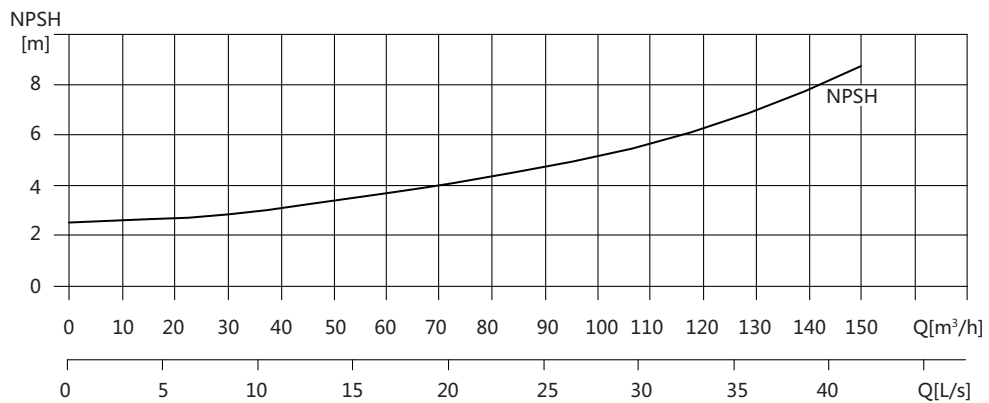
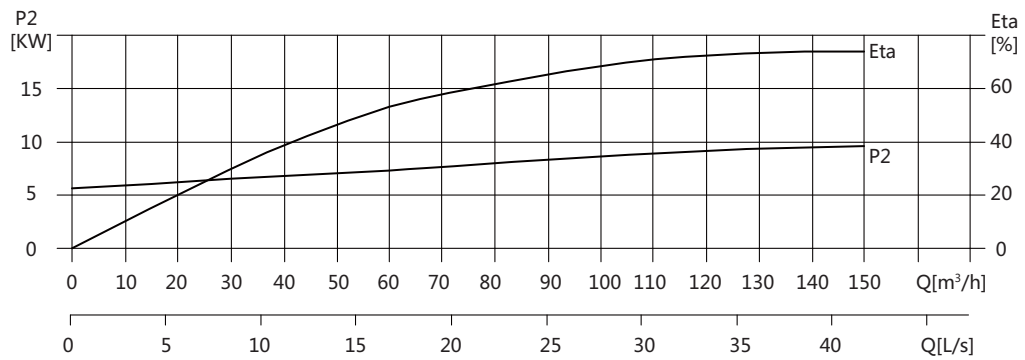
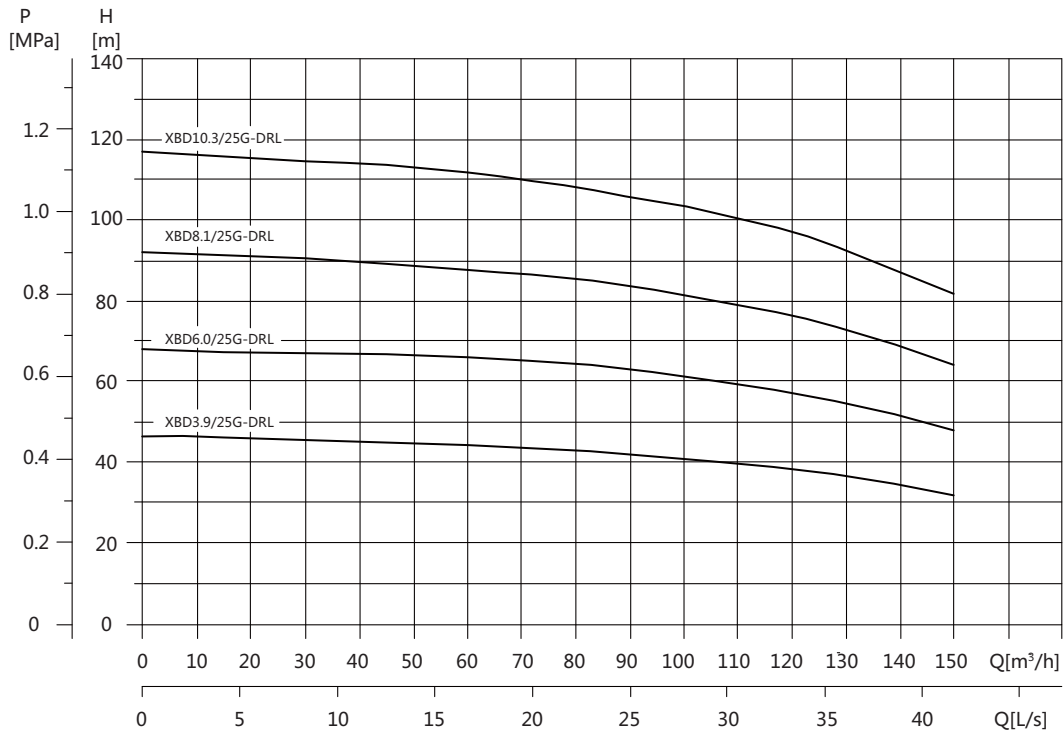
● Performance graph :

XBD\*\*/20G-DRL



● Performance graph :

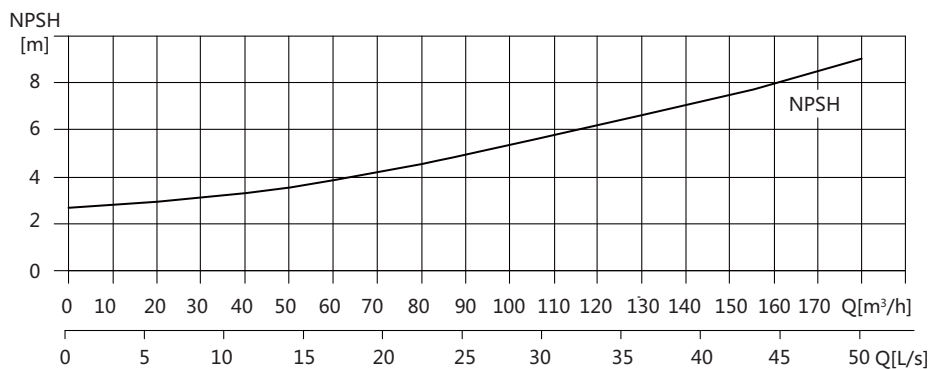
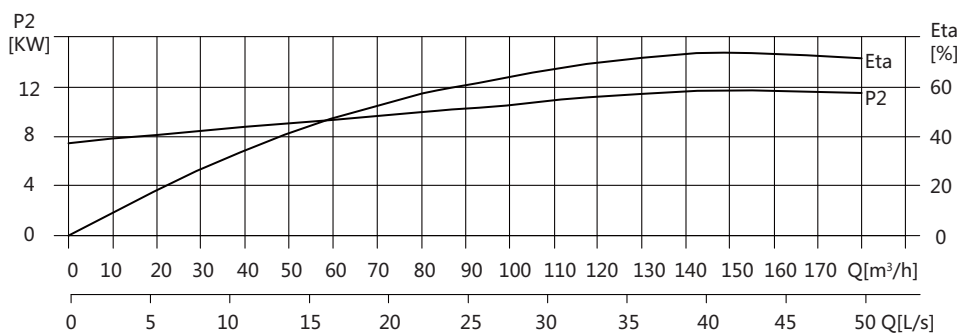
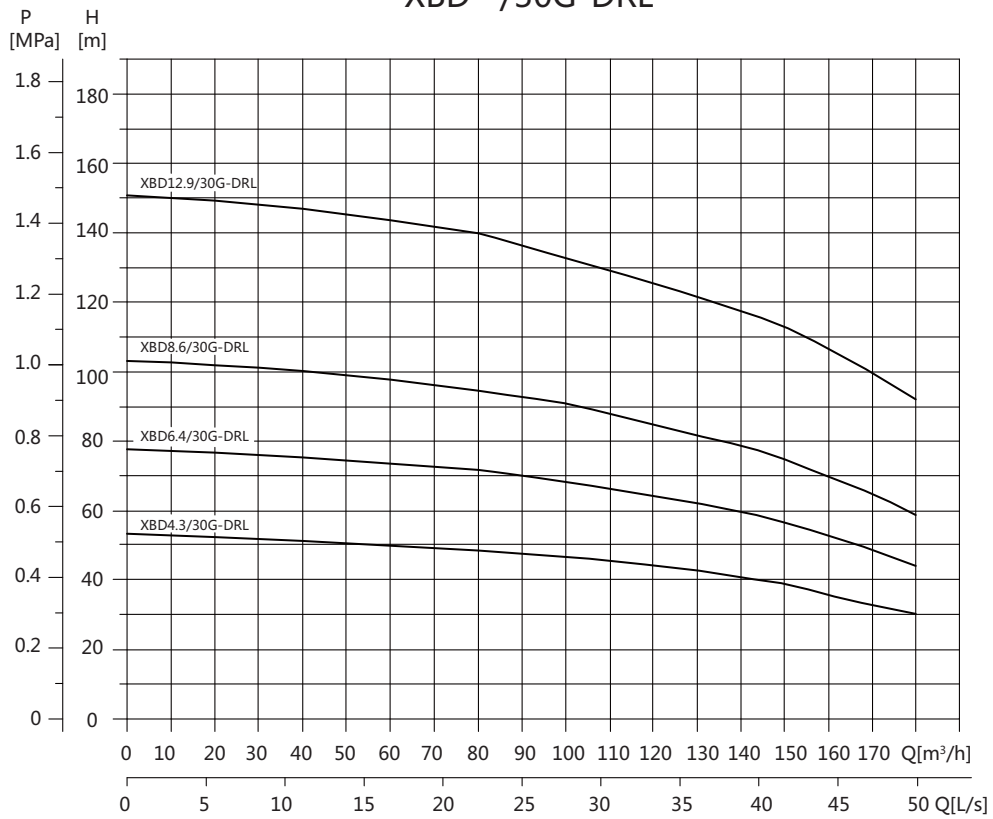
XBD\*\*/25G-DRL





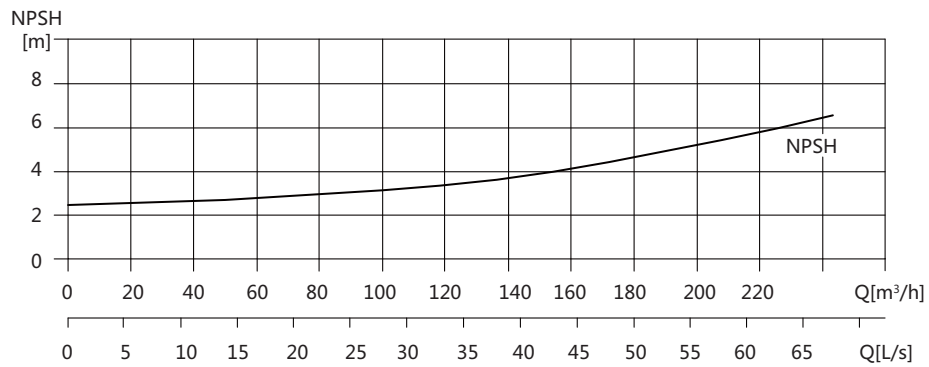
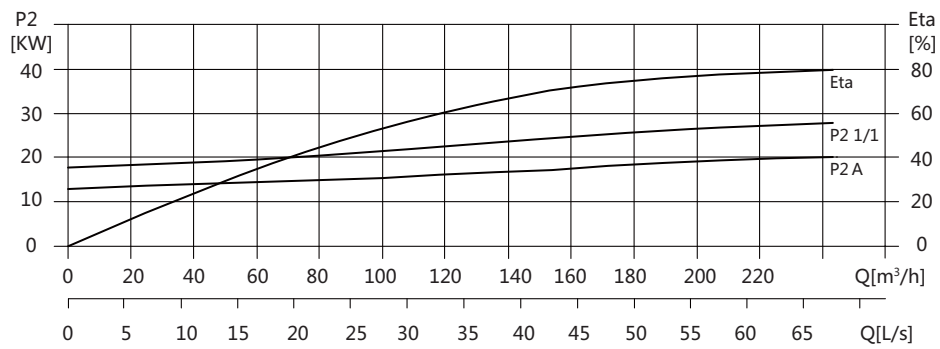
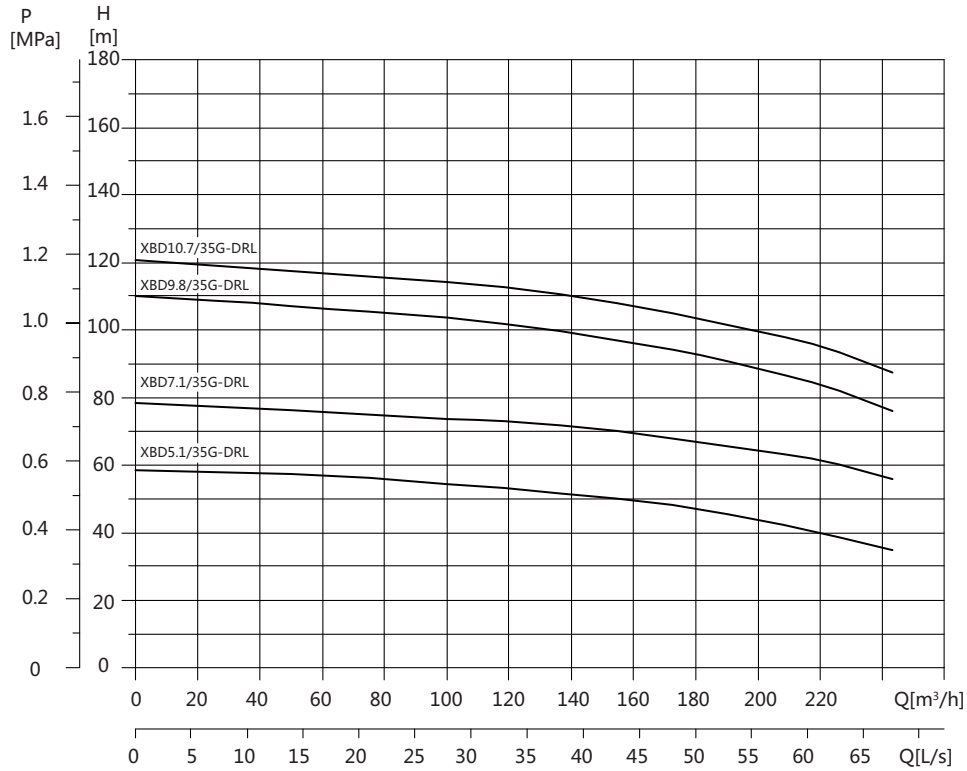
● Performance graph :

XBD\*\*/30G-DRL



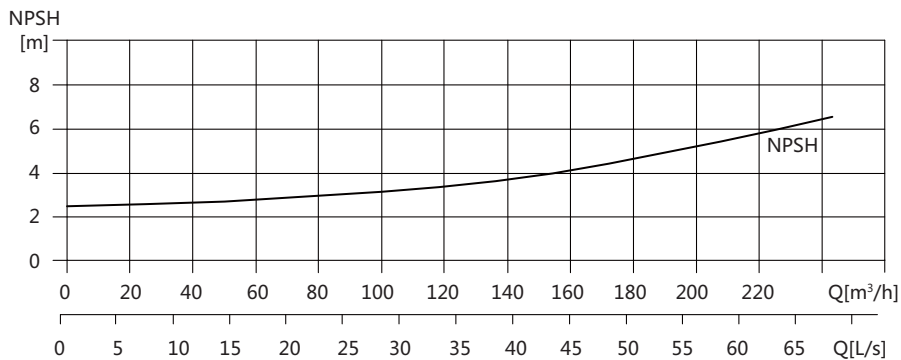
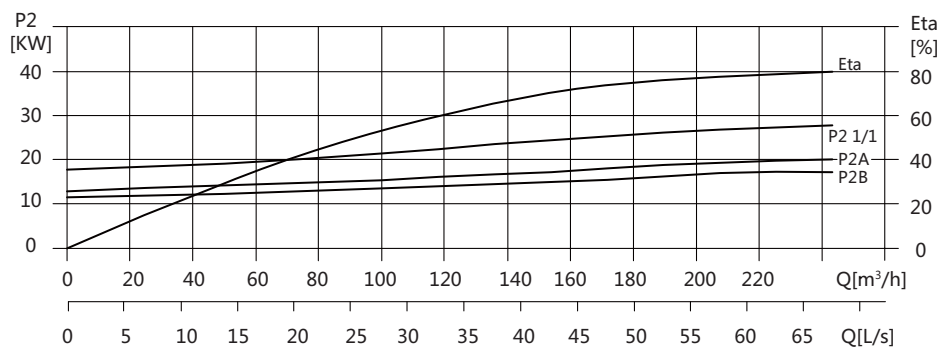
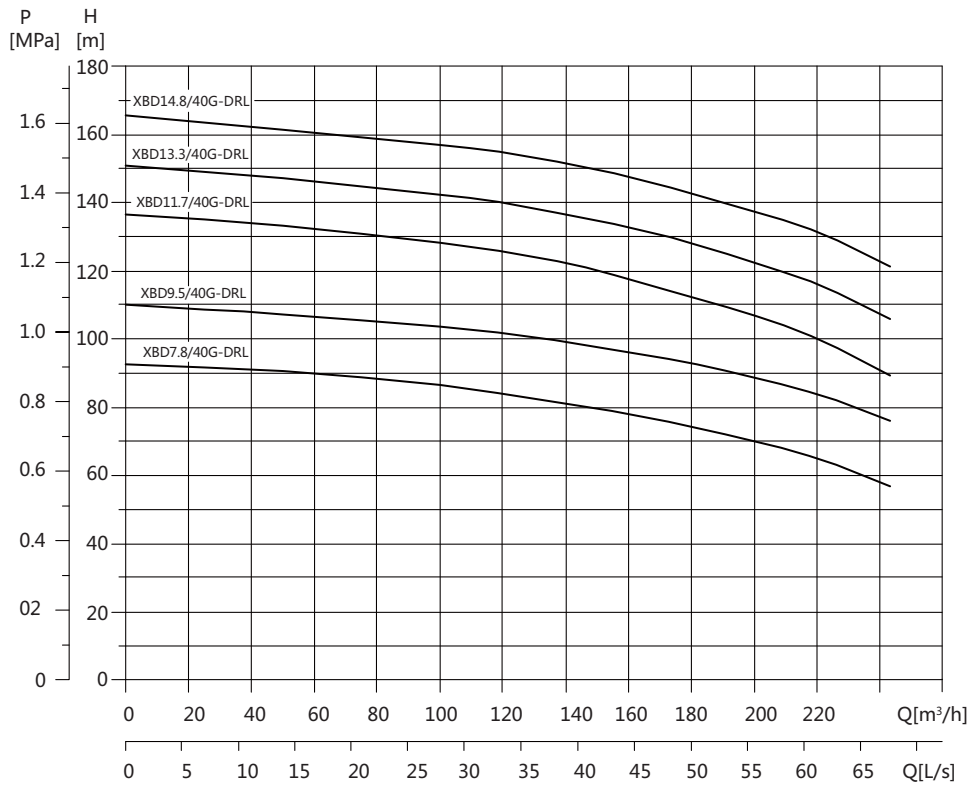
● Performance graph :

XBD\*\*/35G-DRL



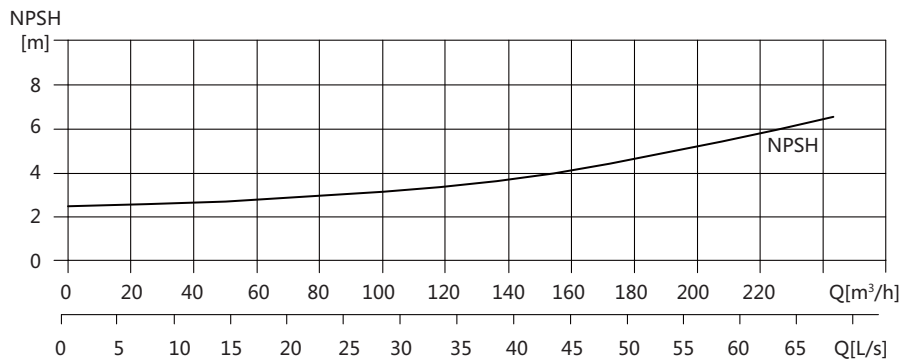
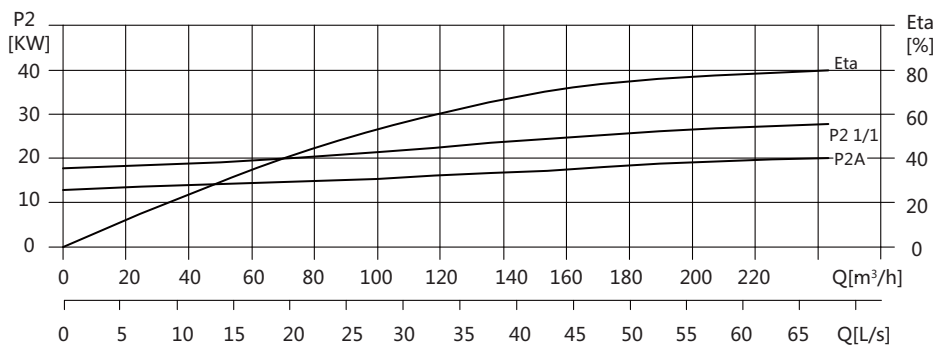
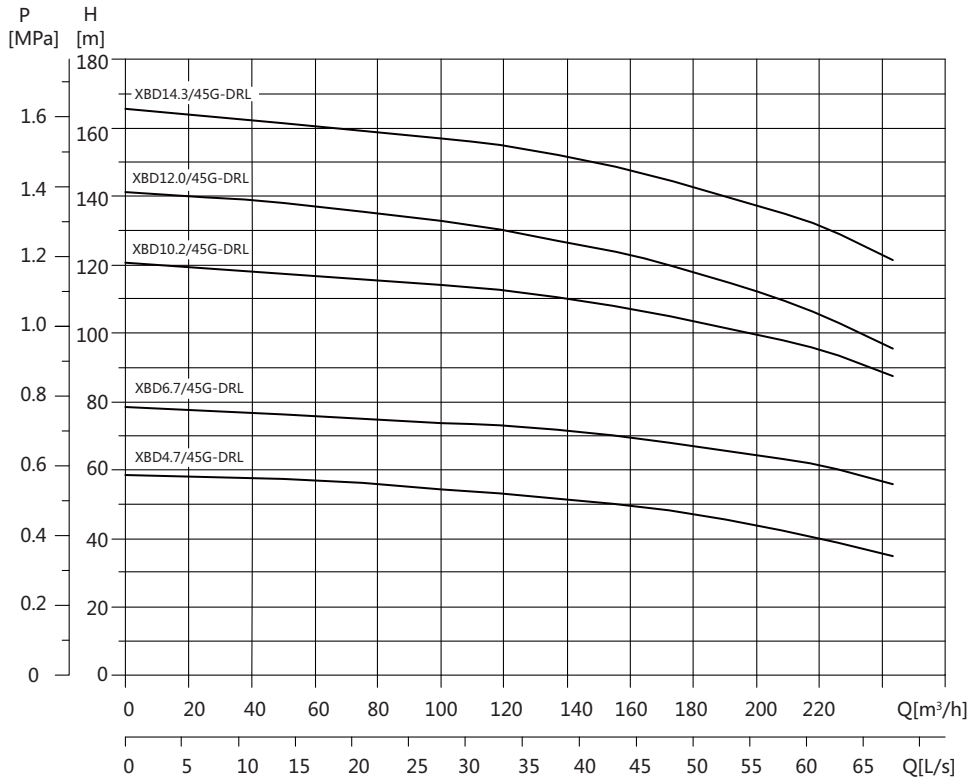
● Performance graph :

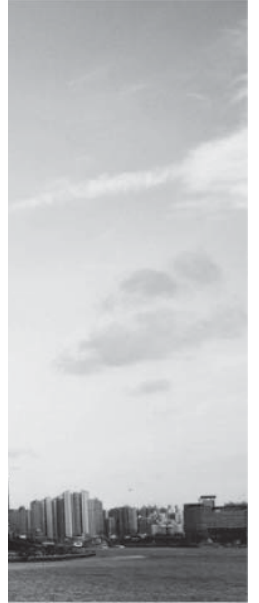
XBD\*\*/40G-DRL



● Performance graph :

XBD\*\*/45G-DRL





**dooch**  
DOOCH CO., LTD.

SHANGHAI SINO-KOREA DOOCH PUMP MFG CO.,LTD

NO.239 ZhangLiantang Road, Liantang Industrial Park, Qingpu District,Shanghai City,China  
TEL: 021-67679390 Fax: 021-67679396

**Service Hotline : 400-622-6271**

[www.doochpump.com.cn](http://www.doochpump.com.cn)